

Bilten

MESEČNI PROMET / MONTHLY TURNOVER

TRŽIŠNI SEGMENT / MARKET SEGMENT	Promet RSD / Turnover RSD	Promena % / % Change (RSD)*	Promet EUR / Turnover EUR	Promena % / % Change (EUR)*	Broj transakcija / No of Transactions
PRIME LISTING-akcije	46,861,297	-69.29%	398,542	-69.29%	701
PRIME LISTING-obveznice Republike Srbije	3,379,285,156	+839.50%	28,738,584	+839.48%	30
STANDARD LISTING-akcije	25,793,474	-89.99%	219,364	-89.99%	74
OPEN MARKET-akcije	10,300,290	-59.28%	87,601	-59.28%	70
MTP-akcije	41,511,949	+76.99%	353,041	+77.00%	134

* mesečna promena / * monthly change

METODE TRGOVANJA / TRADING METHODS	Promet RSD / Turnover RSD	Promena % / % Change (RSD)*	Promet EUR / Turnover EUR	Promena % / % Change (EUR)*	Broj transakcija / No of Transactions
Kontinuirano trgovanje / Continuous trading method	3,476,575,726	+331.65%	29,566,009	+331.65%	1,008
Blok trgovanja / Block trading	27,176,440	+104.15%	231,124	+104.16%	1
Ukupno / Total	3,503,752,166	+327.95%	29,797,133	+327.95%	1,009

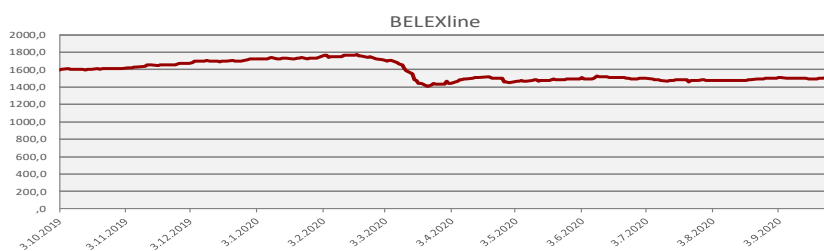
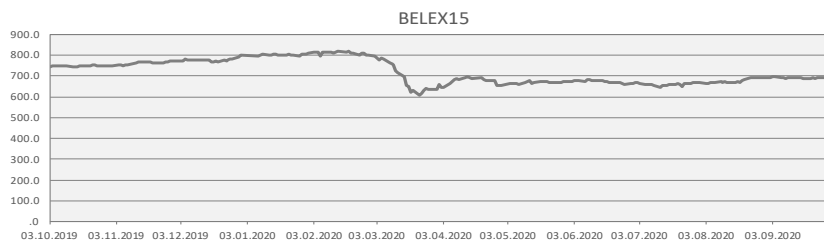
* mesečna promena / * monthly change

STRUKTURA TRGOVANJA / TRADING STRUCTURE	Učešće u ukupnom prometu / Total Turnover	Učešće u ukupnom broju transakcija / Total No. Of Trades	Učešće u prometu akcijama / Turnover - Shares	Učešće u broju transakcija akcijama / No of Trades - Shares
Regulisano tržište / Regulated Market	98.82%	86.72%	66.65%	86.31%
MTP	1.18%	13.28%	33.35%	13.69%
METODE TRGOVANJA / TRADING METHODS				
Kontinuirano trgovanje / Continuous trading	99.22%	99.90%	78.17%	99.90%
Blok trgovanja / Block trading	0.78%	0.10%	21.83%	0.10%
VRSTE HOV / SECURITY TYPE				
Akcije / Shares	3.55%	97.03%	-	-
Obveznice Republike Srbije / RS Bonds	96.45%	2.97%	-	-
Korporativne obveznice / Corporate Bonds	0.00%	0.00%	-	-
INDEKSI / INDICES				
BELEX15	2.26%	79.09%	63.69%	81.51%
BELEXline	2.35%	84.54%	66.03%	87.13%

PROMET U PRETHODNIH 12 MESECI / TURNOVER IN PREVIOUS 12 MONTHS

Mesec / Month	Listing	Open Market	Regulisano / Regulated Market	MTP	Ukupno / Total	Br. Transakcija / No of Transactions
SEPTEMBAR 2020	3,451,939,927	10,300,290	3,462,240,217	41,511,949	3,503,752,166	1,009
AVGUST 2020	769,981,610	25,293,837	795,275,447	23,454,407	818,729,854	1,167
JUL 2020	2,732,815,873	33,352,111	2,766,167,984	29,191,898	2,795,359,882	1,238
JUN 2020	1,284,277,059	61,939,404	1,346,216,463	18,295,881	1,364,512,344	1,862
MAJ 2020	3,095,888,499	54,226,931	3,150,115,430	3,021,914	3,153,137,344	1,384
APRIL 2020	5,307,696,037	103,385,875	5,411,081,912	11,449,781	5,422,531,693	1,039
MART 2020	9,030,036,635	131,788,131	9,161,824,766	267,102,814	9,428,927,580	2,180
FEBRUAR 2020	5,854,541,955	538,203,366	6,392,745,321	80,558,729	6,473,304,050	1,718
JANUAR 2020	4,298,544,657	66,229,693	4,364,774,350	687,189,262	5,051,963,612	1,826
DECEMBAR 2019	9,839,474,538	23,568,588	9,863,043,126	43,301,493	9,906,344,619	2,222
NOVEMBAR 2019	26,582,250,140	2,803,970,842	29,386,220,982	298,387,620	29,684,608,602	2,506
OKTOBAR 2019	1,402,760,533	194,835,647	1,597,596,180	341,111,753	1,938,707,933	3,532

BELEX15	BELEX15	BELEXline
Vrednost / Value	692.93	1,503.29
% Promena / % Change	-0.13%	+ 0.08%
Promena / Change	-0.87	+ 1.17
Promet/ Turnover	79,269,030	82,184,382
Vrednost na dan 8/31/2020.	694.97	1,502.67
Najviša vrednost/ Maximum	696.30	1,507.42
Najniža vrednost/ Minimum	683.13	1,494.73
Godišnja promena / Annual change	-13.57%	-12.94%
PE	8.37	9.48
PB	0.62	0.61
FIS	55.05	53.75
b-FIS	53.10	52.52
s-FIS	57.00	54.98



MESEČNI PREGLED PO HARTIJAMA IZ KORPE INDEKSA BELEX15 / STATISTICS BY BELEX15 BASKET SECURITIES

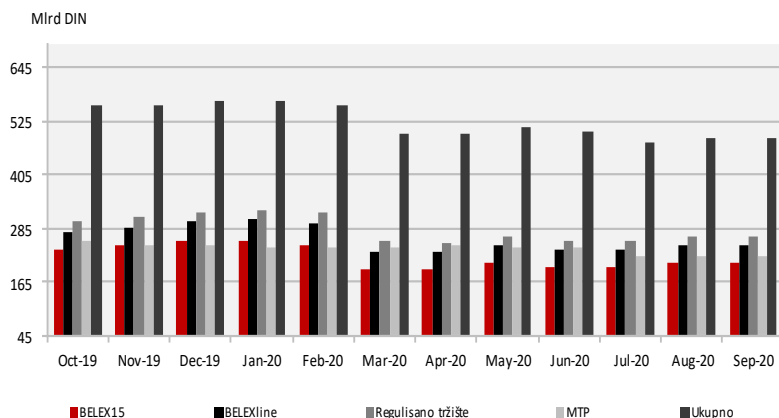
	AERO	ALFA	ENHL	FTO
Poslednja cena / Last Price	927	23,500	410	2,550
Broj transakcija / No. of Trades	286	1	8	9
Obim trgovanja / Volume	2,986	2	17,556	791
Vrednost prometa / Turnover RSD	2,767,036	47,000	6,735,300	2,016,050
Vrednost prometa EUR / Turnover EUR	23,533	400	57,282	17,146
Tržišna kapitalizacija / Market Cap	32,469,221,583	3,697,302,000	4,481,829,720	6,732,000,000
Tržišna kapitalizacija EUR / Market Cap EUR	276,145,082	31,444,910	38,117,182	57,254,489
Prosek prometa RSD / Average Turnover RSD	125,774.36	2,136.36	306,150.00	91,638.64
Prosek prometa EUR / Average Turnover EUR	1,069.66	18.17	2,603.73	779.36
Prosek broja transakcija / Average No. of Trades	13.00	0.05	0.36	0.41
FIS	69.64%	0.00%	49.42%	38.01%
b-FIS	89.08%	%	%	%
s-FIS	50.20%	%	98.85%	76.02%

	IMPL	JESV	KMBN	MTLC
Poslednja cena / Last Price	3,600	6,501	2,650	1,900
Broj transakcija / No. of Trades	7	20	45	9
Obim trgovanja / Volume	367	403	6,451	3,350
Vrednost prometa / Turnover RSD	1,322,850	2,650,906	16,777,550	6,365,018
Vrednost prometa EUR / Turnover EUR	11,251	22,546	142,685	54,133
Tržišna kapitalizacija / Market Cap	3,392,233,200	1,803,201,873	44,567,583,400	3,876,000,000
Tržišna kapitalizacija EUR / Market Cap EUR	28,850,353	15,335,918	379,039,545	32,964,706
Prosek prometa RSD / Average Turnover RSD	60,129.55	120,495.73	762,615.91	289,319.00
Prosek prometa EUR / Average Turnover EUR	511.39	1,024.81	6,485.70	2,460.58
Prosek broja transakcija / Average No. of Trades	0.32	0.91	2.05	0.41
FIS	0.00%	23.25%	88.12%	38.51%
b-FIS	%	20.84%	78.44%	%
s-FIS	%	25.65%	97.81%	77.01%

	NIIS	TGAS
Poslednja cena / Last Price	577	13,000
Broj transakcija / No. of Trades	405	8
Obim trgovanja / Volume	64,020	266
Vrednost prometa / Turnover RSD	37,127,016	3,460,304
Vrednost prometa EUR / Turnover EUR	315,755	29,429
Tržišna kapitalizacija / Market Cap	94,085,850,800	13,476,554,000
Tržišna kapitalizacija EUR / Market Cap EUR	800,183,796	114,615,748
Prosek prometa RSD / Average Turnover RSD	1,687,591.64	157,286.55
Prosek prometa EUR / Average Turnover EUR	14,352.48	1,337.68
Prosek broja transakcija / Average No. of Trades	18.41	0.36
FIS	53.24%	0.00%
b-FIS	69.81%	%
s-FIS	36.67%	%

TRŽIŠNA KAPITALIZACIJA / MARKET CAPITALIZATION

	U hiljadama / In thousands RSD	U hiljadama / In thousands EUR
Ukupno/Total	488,297,264	4,152,883
Regulisano tržište/ Regulated Market	267,313,151	2,273,452
Listing	197,587,649	1,680,449
Prime Listing –akcije / shares	147,340,863	1,253,108
Standard Listing-akcije / shares	50,246,785	427,340
Open Market	69,725,502	593,003
MTP	220,984,113	1,879,431
BELEX15	208,581,777	1,773,952
BELEXline	246,185,234	2,093,763



SEKTORSKA KLASIFIKACIJA—AKCIJE/ SECTOR CLASSIFICATION—SHARES

Sektor / Sector	Promet—Akcije / Turnover - Shares	Br. transakcija—Akcije / No. Of Trades - Shares	Tržišna kapitalizacija / Market Capitalization	FIS
Prerađivačka industrija	10,521,246	86	171,764,500,727	8.02%
Rudarstvo	37,127,016	405	94,748,207,194	53.24%
Finansijske delatnosti i delatnost osiguranja	32,511,721	80	70,339,593,551	63.38%
Trgovina na veliko i malo i popravka motornih vozila	29,477,008	25	40,464,074,078	0.00%
Poslovanje nekretninama	2,836,936	287	33,929,077,841	67.92%
Građevinarstvo	8,021,758	65	25,000,073,325	37.17%
Snabdevanje električnom energijom, gasom i parom	231,945	2	16,303,961,190	0.40%
Poljoprivreda, šumarstvo i ribarstvo	1,755,800	18	13,317,736,621	9.00%
Saobraćaj i skladištenje	1,143,100	3	11,972,170,477	0.00%
Usluge smeštaja i ishrane		0	3,957,274,006	0.00%
Stručne, naučne, inovacione i tehničke delatnosti	138,880	1	3,410,980,736	0.00%
Informisanje i komunikacije	365,000	6	1,811,504,424	0.00%
Administrativne i pomoćne uslužne delatnosti	336,600	1	731,657,793	0.00%
Obrazovanje		0	207,974,124	0.00%
Ostale uslužne delatnosti		0	174,410,100	0.00%
Umetnost, zabava i rekreacija		0	102,219,000	0.00%
Snabdevanje vodom i upravljanje otpadnim vodama		0	58,057,137	0.00%
Zdravstvena i socijalna zaštita		0	3,792,040	0.00%

UČEŠĆE ČLANOVA U PROMETU / PARTICIPATION OF STOCK EXCHANGE MEMBERS IN THE TURNOVER

REGULISANO TRŽIŠTE / REGULATED MARKET

Član Berze / Member	Udeo u prometu / Participation in Turnover (%)	Udeo u broju transakcija / Participation in No. Of Transactions (%)
Convest a.d., Novi Sad	31.47%	0.29%
Raiffeisen banka a.d., Beograd	31.42%	1.71%
Banka Poštanska štedionica a.d., Beograd	11.38%	32.34%
Erste bank a.d., Novi Sad	10.59%	0.63%
M&V Investments a.d., Beograd	7.52%	3.77%
UniCredit Bank Srbija a.d., Beograd	4.42%	0.11%
Vojvođanska banka a.d., Novi Sad	1.56%	6.51%
Dunav Stockbroker a.d., Beograd	0.59%	20.97%
Momentum Securities a.d., Novi Sad	0.45%	3.09%
Komercijalna banka a.d., Beograd	0.20%	18.40%
Ostali	0.39%	12.17%

MTP

Član Berze / Member	Udeo u prometu / Participation in Turnover (%)	Udeo u broju transakcija / Participation in No. Of Transactions (%)
Ilirika investments a.d., Beograd	36.46%	38.35%
M&V Investments a.d., Beograd	28.21%	3.38%
Tesla Capital a.d., Beograd	11.64%	18.80%
Vojvođanska banka a.d., Novi Sad	6.63%	7.89%
Komercijalna banka a.d., Beograd	4.36%	9.02%
Momentum Securities a.d., Novi Sad	3.93%	9.02%
Banka Poštanska štedionica a.d., Beograd	2.62%	0.75%
Intercity broker a.d., Beograd	2.27%	2.26%
Euro fineks broker a.d., Beograd	1.88%	6.77%
Tezoro broker a.d., Beograd	0.94%	1.50%
Ostali	1.05%	2.26%

Mesec / Month	FIT	FIS	b-FIS	s-FIS	FIB
SEPTEMBAR 2020	2.65%	37.18%	35.12%	39.25%	1.38%
AVGUST 2020	36.27%	54.57%	36.65%	72.48%	12.91%
JUL 2020	11.33%	37.77%	35.34%	40.20%	10.00%
JUN 2020	36.22%	47.86%	36.49%	59.23%	33.22%
MAJ 2020	6.15%	28.74%	23.40%	34.07%	4.17%
APRIL 2020	20.63%	34.99%	29.08%	40.90%	19.88%
MART 2020	13.06%	26.78%	20.15%	33.40%	12.06%
FEBRUAR 2020	13.76%	14.81%	11.82%	17.80%	13.61%
JANUAR 2020	23.00%	44.91%	6.14%	83.67%	18.28%
DECEMBAR 2019	3.05%	34.56%	59.67%	9.45%	2.17%
NOVEMBAR 2019	44.85%	45.35%	0.72%	89.97%	27.10%
OKTOBAR 2019	14.49%	25.16%	28.40%	21.93%	6.82%

Prema specifikaciji klijenata Centralnog registra / According to the Central depository clients

NAJVEĆE PROMENE CENE, REGULISANO TRŽIŠTE / BIGGEST PRICE CHANGES, REGULATED MARKET

Izdavalac / Issuer	Cena / Price 30.09.2020.	Cena / Price 31.08.2020.	Promena % / % Change	Izdavalac / Issuer	Cena / Price 30.09.2020.	Cena / Price 31.08.2020.	Promena % / % Change
Komercijalna banka a.d., Beograd,	990	900	+ 10.00%	Impol Seval a.d., Sevojno, IMPL	3,600	3,700	-2.70%
Globos osiguranje a.d., Beograd, GLOS	400	390	+ 2.56%	Energoprojekt holding a.d., Beograd, ENHL	410	420	-2.38%
Fintel energija a.d., Beograd, FINT	615	600	+ 2.50%	NIS a.d., Novi Sad, NIIS	577	580	-0.52%
Philip Morris Operations a.d., Niš, DINNPB	6,101	6,000	+ 1.68%	Alfa plam a.d., Vranje, ALFA	23,500	23,500	0.00%
Dunav osiguranje a.d., Beograd, DNOS	3,051	3,001	+ 1.67%	Galenika Fitofarmacija a.d., Zemun, FITO	2,550	2,550	0.00%

NAJVEĆA VREDNOST PROMETA, REGULISANO TRŽIŠTE / BIGGEST TURNOVER, REGULATED MARKET

Izdavalac / Issuer	Vrednost prometa / Turnover	Blok trgovanja / Block Trades	Izdavalac / Issuer	Vrednost prometa / Turnover	Blok trgovanja / Block Trades
NIS a.d., Novi Sad, NIIS	37,127,016	0	Aerodrom Nikola Tesla a.d., Beograd, AERO	2,767,036	0
Komercijalna banka a.d., Beograd, KMBN	16,777,550	0	Jedinstvo a.d., Sevojno, JESV	2,650,906	0
Energoprojekt holding a.d., Beograd, ENHL	6,735,300	0	Philip Morris Operations a.d., Niš, DINNPB	2,439,625	0
Metalac a.d., Gornji Milanovac, MTLT	6,365,018	0	Galenika Fitofarmacija a.d., Zemun, FITO	2,016,050	0
Messer Tehnogas a.d., Beograd, TGAS	3,460,304	0	Impol Seval a.d., Sevojno, IMPL	1,322,850	0

**NAJNIŽI P/E, REGULISANO TRŽIŠTE /
LOWEST P/E, REGULATED MARKET**

Izdavalac / Issuer	P/E	Izdavalac / Issuer	P/E
Dunav osiguranje a.d., Beograd	4.30	Impol Seval a.d., Sevojno	6.72
Komercijalna banka a.d., Beograd	5.09	Messer Tehnogas a.d., Beograd	7.53
Jedinstvo a.d., Sevojno	5.29	VP Dunav a.d., Bačka Palanka	8.12
NIS a.d., Novi Sad	5.32	Galenika Fitofarmacija a.d., Zemun	9.79
Voda Vrnjci a.d., Vrnjačka Banja	6.56	Kopaonik a.d., Beograd	12.05

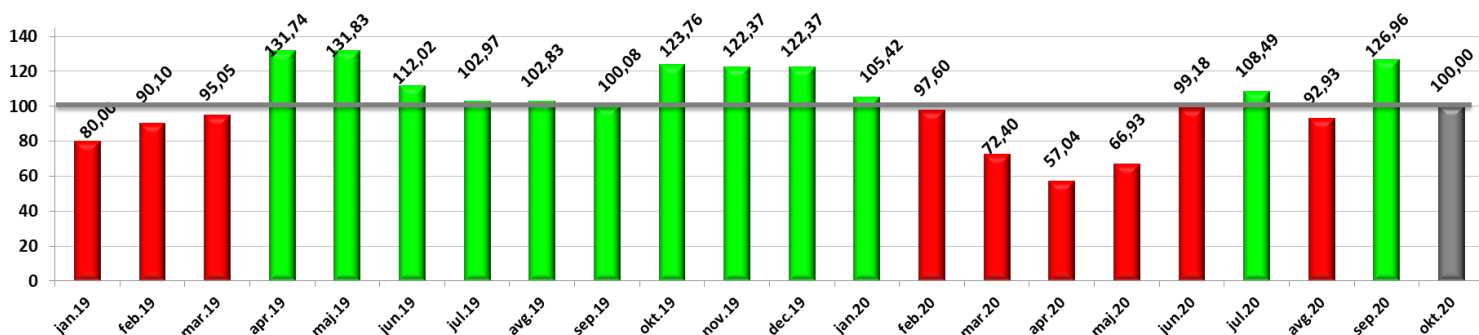
**NAJNIŽI P/B, REGULISANO TRŽIŠTE /
LOWEST P/B, REGULATED MARKET**

Izdavalac / Issuer	P/B	Izdavalac / Issuer	P/B
Voda Vrnjci a.d., Vrnjačka Banja	0.25	Alfa plam a.d., Vranje	0.45
ALTA banka a.d., Beograd	0.35	Energoprojekt holding a.d., Beograd	0.50
NIS a.d., Novi Sad	0.36	Impol Seval a.d., Sevojno	0.50
Lasta a.d., Beograd	0.37	Komercijalna banka a.d., Beograd	0.60
Kopaonik a.d., Beograd	0.40	Jedinstvo a.d., Sevojno	0.64

NAJVEĆA TRŽIŠNA KAPITALIZACIJA, REGULISANO TRŽIŠTE / BIGGEST MARKET CAPITALIZATION, REGULATED MARKET

Izdavalac / Issuer	Simbol	Tržišna kapitalizacija - mil RSD / Market Capitalization—mil RSD	FFc	Izdavalac / Issuer	Simbol	Tržišna kapitalizacija - mil RSD / Market Capitalization—mil RSD	FFc
NIS a.d., Novi Sad	NIIS	94,085,851	0.14	Messer Tehnogas a.d., Beograd	TGAS	13,476,554	0.18
Komercijalna banka a.d., Beograd	KMBN	44,567,583	0.17	Dunav osiguranje a.d., Beograd	DNOS	12,893,895	0.06
Aerodrom Nikola Tesla a.d., Beograd	AERO	32,469,222	0.15	Galenika Fitofarmacija a.d., Zemun	FITO	6,732,000	0.28
Philip Morris Operations a.d., Niš	DINNPB	20,186,794	0.11	Energoprojekt holding a.d., Beograd	ENHL	4,481,830	0.15
Fintel energija a.d., Beograd	FINT	16,303,961	0.06	Metalac a.d., Gornji Milanovac	MTLT	3,876,000	0.81

BELEXsentiment



LISTING

PRIME LISTING—AKCIJE / SHARES

Izdavalac / Issuer	Simbol / Symbol	Cena / Price	Mesečna promena % / Monthly Change %	Obim / Volume	Promet (RSD) / Turnover (RSD)	Raspon cene-52 nedelje / 52 Weeks High/Low	Broj emitovanih akcija / Number of Shares Issued	%Prinos (dividenda) / Dividend	P/E	P/B
Aerodrom Nikola Tesla a.d., Beograd	AERO	927	+ 0.11%	2,986	2,767,036	710 - 1,100	35,026,129	1.40	-71.54	1.09
Energoprojekt holding a.d., Beograd	ENHL	410	-2.38%	17,556	6,735,300	380 - 730	10,931,292	0.00	-158.58	0.50
Fintel energija a.d., Beograd	FINT	615	+ 2.50%	393	231,945	530 - 670	26,510,506	0.00	-288.31	35.00
NIS a.d., Novi Sad	NIS	577	-0.52%	64,020	37,127,016	490 - 760	163,060,400	0.06	5.32	0.36

PRIME LISTING—OBVEZNICE RS / RS BONDS

Simbol / Symbol	Cena / Price	Mesečna promena %	Promet RSD / Turnover RSD	Mesečni raspon cene / Monthly High/Low
RSO15102	116.8684	+ 0.4554%	2,968,457	116.8684-116.8684
RSO16142	110.7162	+ 0.0848%	203,717,808	110.7162-110.7162
RSO16144	101.7157	-2.3710%	837,210,433	101.7157-101.7157
RSO17150	103.5606	-2.4244%	852,395,596	103.5606-103.5606
RSO17168	104.1091	-0.9315%	489,679,234	104.1091-104.1091
RSO18171	108.2908	+ 2.1575%	492,641,285	108.2587-108.2908
RSO19185	103.2304	+ 0.3023%	364,156,591	103.2304-103.2304
RSO20194	100.1616	-1.2510%	89,517,311	100.1616-100.1616
RSO20196	100.3124	+ 0.5818%	43,174,457	100.3124-100.3124
RSSDS20213	96.7700	-0.1342%	539,896	96.7100-96.7700
RSSDS20214	95.5700	-0.4479%	533,199	95.5100-95.5700
RSSDS20225	93.9200	-1.0327%	524,081	93.9000-93.9200
RSSDS20226	92.0000	-1.6043%	865,922	92.0000-92.0000
RSSDS20237	91.1000	-1.5135%	857,643	91.1000-91.1500
RSSDS20238	90.2000	+ 0.3337%	503,243	90.1600-90.2000

STANDARD LISTING—AKCIJE / SHARES

Izdavalac / Issuer	Simbol / Symbol	Cena / Price	Mesečna promena % / Monthly Change %	Obim / Volume	Promet (RSD) / Turnover (RSD)	Raspon cene-52 nedelje / 52 Weeks High/Low	Broj emitovanih akcija / Number of Shares Issued	%Prinos (dividenda) / Dividend	P/E	P/B
Jedinstvo a.d., Sevojno	JESV	6,501	+ 0.02%	403	2,650,906	5,500 - 7,020	277,373	0.05	5.29	0.64
Komercijalna banka a.d., Beograd	KMBN	2,650	0.00%	6,451	16,777,550	2,150 - 3,380	16,817,956	0.00	5.09	0.60
Metalac a.d., Gornji Milanovac	MTLC	1,900	0.00%	3,350	6,365,018	1,750 - 2,200	2,040,000	0.04	14.01	1.15

OPEN MARKET

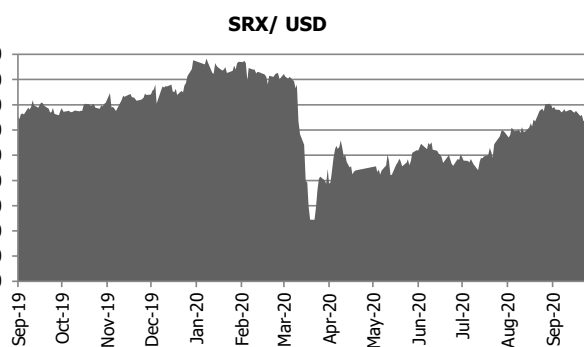
AKCIJE / SHARES

Izdavalac / Issuer	Simbol / Symbol	Cena / Price	Mesečna promena % / Monthly Change %	Obim / Volume	Promet (RSD) / Turnover (RSD)	Raspon cene-52 nedelje / 52 Weeks High/Low	Broj emitovanih akcija / Number of Shares Issued	Tržišna kapitalizacija / Market Capitalization
Alfa plam a.d., Vranje	ALFA	23,500	0.00%	2	47,000	23500-30900	157,332	3,697,302
Philip Morris Operations a.d., Niš	DINNPB	6,101	+ 1.68%	399	2,439,625	4200-6500	3,308,768	20,186,794
Dunav osiguranje a.d., Beograd	DNOS	3,051	+ 1.67%	18	54,918	2950-4000	4,226,121	12,893,895
Galenika Fitofarmacija a.d., Zemun	FITO	2,550	0.00%	791	2,016,050	2400-3100	2,640,000	6,732,000
Globos osiguranje a.d., Beograd	GLOS	400	+ 2.56%	511	203,080	300-599	1,369,237	547,695
Impol Seval a.d., Sevojno	IMPL	3,600	-2.70%	367	1,322,850	3000-4000	942,287	3,392,233
Komercijalna banka a.d., Beograd	KMBNPB	990	+ 10.00%	98	84,140	610-1330	373,510	369,775
Kopaonik a.d., Beograd	KOPB	7,100	0.00%	94	667,403	6300-7101	138,906	986,233
Messer Tehnogas a.d., Beograd	TGAS	13,000	+ 0.78%	266	3,460,304	10300-16000	1,036,658	13,476,554
Tigar a.d., Pirot	TIGR	20	0.00%	246	4,920	20-65	8,156,236	163,125

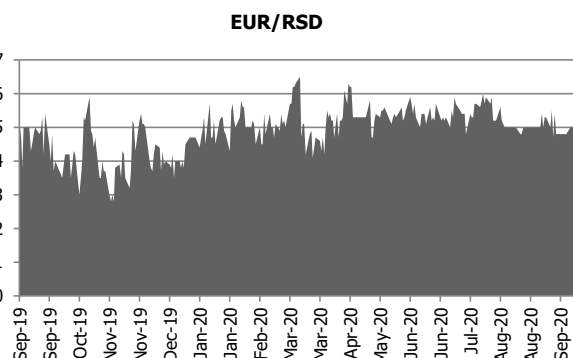
AKCIJE

Izdavalac	Simbol	Cena	Mesečna promena %	Obim	Promet (DIN)	Raspon cene-52 nedelje	Broj emitovanih akcija	Tržišna kapitalizacija
AMS Osiguranje a.d. , Beograd	AMSO	1,015	+ 1.00%	2,253	2,286,795	600-1200	314,550	319,268
Aquatus a.d. , Beograd	AQUA	106	0.00%	559	59,604	106-107	237,718	25,198
Borac a.d. , Šurjan	BRCS	1,350	-7.41%	750	975,600	1166-1458	71,412	96,406
Goša FOM a.d. , Smederevska Palanka	GFOM	350	0.00%	55	19,250	284-450	1,369,003	479,151
Goša FSO a.d. , Simićevo	GFSO	660	0.00%	4	2,640	600-850	126,900	83,754
Sjaj u tami a.d. , Beograd	GRDN	699	0.00%	100	69,900	648-700	672,736	470,242
Geosonda - Fundiranje a.d. , Beograd	GSFD	600	+ 3.45%	303	178,940	500-700	76,336	45,802
Jugoprevoz Kruševac a.d. , Kruševac	JGPK	2,300	-8.00%	497	1,143,100	2300-2900	76,138	175,117
Minel Koncern a.d. , Beograd	MNHL	1,120	0.00%	124	138,880	1120-1122	259,210	290,315
Novosadski sajam a.d. , Novi Sad	NSSJ	600	0.00%	561	336,600	599-623	818,947	491,368
Omoljica a.d. , Omoljica	OMOL	780	-2.50%	979	780,200	780-850	326,875	254,963
Pomoravlje a.d. , Niš	PMNI	500	-22.48%	341	170,500	500-645	367,320	183,660
Preduzeće za puteve Valjevo a.d. , Valjevo	PPVA	1,626	+ 0.99%	871	1,416,486	1400-2600	201,904	328,296
Putevi a.d. , Požega	PUPO	200	0.00%	50	10,000	200-200	369,376	73,875
Putevi a.d. , Užice	PUUE	113	+ 0.89%	102	11,526	80-179	982,241	110,993
Savremena administracija a.d. , Beograd	SVRME	2,500	-8.16%	146	365,000	2500-2722	169,877	424,693
Svetlost a.d. , Beograd	SVTS	1,048	+ 4.80%	3,582	3,753,900	950-1050	42,395	44,430
Tehnohemija a.d. , Beograd	THHM	227	0.00%	2,334	529,818	120-285	1,024,544	232,571
Termovent SC Livnica čelika a.d. , Bačka Topola	TLVC	2,300	-0.04%	20	46,000	2246-3050	60,569	139,309
Uniprom a.d. , Novi Pazar	UNPR	750	0.00%	2,361	1,770,750	500-750	201,890	151,418
Utva silosi a.d. , Kovin	UTSI	1,450	+ 3.57%	190	270,020	1251-2000	186,979	271,120

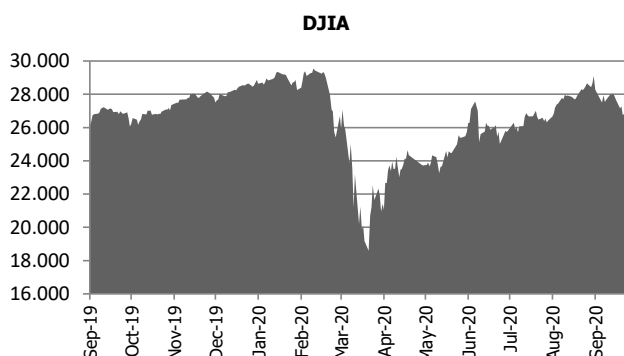
Stock Indices	LAST	YTD Change	YoY Change	Monthly Change
SRX USD	195,96	-9,96%	10,86%	-1,69%
DJ BALKAN 50	372,71	-26,07%	43,73%	0,20%
CECE BANKING	774,59	-44,04%	46,85%	-8,56%
DJ Stoxx 50	2949,11	-13,34%	24,86%	-1,74%
Eurotop 100	2686,6	-14,76%	24,18%	-1,94%
FTSE 100	5935,06	6,43%	22,07%	-1,66%
Xetra DAX	13028,06	-1,67%	23,85%	-1,45%
S&P 500	3511,93	0,95%	27,06%	5,11%
DJ Industrial	28679,81	0,99%	23,54%	-2,33%
Nikkei 225	23185,12	3,99%	23,59%	0,20%



FX & MM Rates	BID	Monthly High	Monthly Low	Monthly Change
EUR/USD	1,1746	1,1831	1,1697	-1,86%
EUR/GBP	0,9025	0,916	0,9008	1,60%
EUR/CHF	1,0728	1,0805	1,0725	0,06%
EUR/RSD	117,55	117,56	117,56	0,00%
EUR/JPY	123,5	125,09	123,03	-2,29%
3M Euro Deposit	0,53	0,66	0,25	4,22%
3M USD Deposit	0,19	0,41	0,12	0,15%
3M RSD Deposit	9,99	12,19	9,10	4,81%



Commodities	LAST	Units	Monthly Change
Gold	1900,89	\$/oz	-4,47%
Silver	24,28	\$/oz	-21,59%
LME Copper	CU 6702.0/02.0 1	\$/ton	7,24%
LME Aluminum	AL 1836.0/36.0 1	\$/ton	12,03%
IPE Brent	43,32	\$/bbl	-10,57%
IPE Gasoil	343,00	\$/ton	-9,86%
CBOT Wheat	596,75	USc/bsh	5,84%
CBOT Corn	396,50	USc/bsh	8,05%
CBOT Soybean	1056,25	USc/bsh	7,06%
CBOT Soymeal	363,60	USD/ton	10,33%
LIFFE Coffee	1250,00	USD/ton	-16,63%
LIFFE Sugar	386,90	USD/ton	4,16%

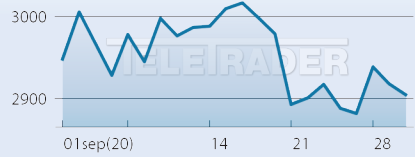


Debt -- CDS	LAST	Term	S&P	Moody's
UNITED KINGDOM	20,95	5Y	AA	Aa2
GERMANY	10,85	5Y	AAA	Aaa
SPAIN	56,34	5Y	A	Baa1
UKRAINE	537,13	5Y	B	Caa1
ROMANIA	66,84	5Y	BBB-	Baa3
HUNGARY	64,53	5Y	BBB	Baa3
CROATIA	67,34	5Y	BBB-	Ba2
JAPAN	16,77	5Y	A+	A1
CHINA	46,80	5Y	A+	A1
ARGENTINA	8312,69	5Y	SD	Caa2
BRAZIL	221,34	5Y	BB-	Ba2
MEXICO	121,61	5Y	A-	A3



DJ STOXX 50

Vrednost
2.904,12



↑ DOBITNICI

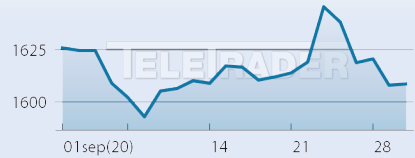
IME	CENA	PROMENA%	OBIM
ADYEN N.V. EO-	1.585,00	11,74%	1.314
KERING S.A. INH. EO 4	569,50	9,81%	1.878
DAIMLER AG NA O.N.	46,44	9,31%	318.705
ADIDAS AG NA O.N.	277,50	9,04%	18.007
UNILEVER PLC LS-	53,42	8,64%	9.367

↓ GUBITNICI

IME	CENA	PROMENA%	OBIM
BP PLC DL-	2,49	-14,99%	1.941.746
BAYER AG NA O.N.	47,89	-13,87%	202.839
BNP PARIBAS INH. EO 2	31,37	-13,64%	31.480
ROYAL DUTCH SHELL A	10,65	-12,98%	875.792
TOTAL S.E. EO 2	29,27	-11,57%	131.802

Crobex

Vrednost
1.608,54



↑ DOBITNICI

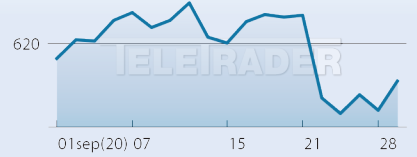
IME	CENA	PROMENA%	OBIM
HT d.d. - redovne dionice	175,50	4,46%	150.816
Podravka d.d. - redovne	444,00	3,98%	25.286
Dalekovod d.d. - redovne	7,92	-1,00%	1.119.461
Institut IGH d.d. - redovne	156,00	-2,50%	18.974
Zagrebačka banka d.d. -	49,70	-3,31%	68.766

↓ GUBITNICI

IME	CENA	PROMENA%	OBIM
Viro tvornica šećera d.d. -	48,60	-13,21%	26.528
OT - Optima Telekom d.d.	4,60	-7,26%	302.862
AD plastik d.d. - redovne	130,00	-4,76%	55.660
Atlantska plovidba d.d. -	195,50	-4,63%	12.304
Zagrebačka banka d.d. -	49,70	-3,31%	68.766

BIRS

Vrednost
613,13



↑ DOBITNICI

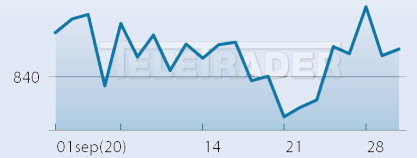
IME	CENA	PROMENA%	OBIM
Telekom Srpske a.d.	1,03	5,10%	462.494
ZTC Banja Vrućica a.d.	1,32	0,76%	69.397

↓ GUBITNICI

IME	CENA	PROMENA%	OBIM
ZTC Banja Vrućica a.d.	1,32	0,76%	69.397
Telekom Srpske a.d.	1,03	5,10%	462.494

SBI TOP

Vrednost
846,20



↑ DOBITNICI

IME	CENA	PROMENA%	OBIM
PETROL	336,00	12,37%	14.337
NLB	38,40	-1,54%	21.536
ZAVAROVALNICA TRIGLAV	27,40	-2,14%	62.513
LUKA KOPER	18,60	-3,13%	27.541
CINKARNA CELJE	160,00	-5,33%	13.233

↓ GUBITNICI

IME	CENA	PROMENA%	OBIM
KRKA	82,00	-5,96%	91.499
TELEKOM SLOVENIJE	44,40	-5,53%	18.577
CINKARNA CELJE	160,00	-5,33%	13.233
LUKA KOPER	18,60	-3,13%	27.541
ZAVAROVALNICA TRIGLAV	27,40	-2,14%	62.513

SASX10

Vrednost
811,27



↑ DOBITNICI

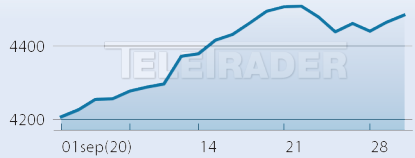
IME	CENA	PROMENA%	OBIM
SARAJEVO OSIGURANJE	15,60	15,56%	20.685
BH TELECOM D.D.	8,75	2,82%	11.718
SANITEKS D.D. VELIKA	9,14	-0,11%	1.265

↓ GUBITNICI

IME	CENA	PROMENA%	OBIM
SANITEKS D.D. VELIKA	9,14	-0,11%	1.265
BH TELECOM D.D.	8,75	2,82%	11.718
SARAJEVO OSIGURANJE	15,60	15,56%	20.685

MBI10

Vrednost
4.485,18



↑ DOBITNICI

IME	CENA	PROMENA%	OBIM
Makpetrol Skopje	70.000,00	12,00%	662
Komercijalna banka	6.950,00	10,34%	22.531
Granit Skopje	1.030,00	5,64%	35.297
Alkaloid Skopje	12.500,00	2,46%	4.825

↓ GUBITNICI

IME	CENA	PROMENA%	OBIM
Alkaloid Skopje	12.500,00	2,46%	4.825
Granit Skopje	1.030,00	5,64%	35.297
Komercijalna banka	6.950,00	10,34%	22.531
Makpetrol Skopje	70.000,00	12,00%	662

Tehnologiju i podatke obezbedio TeleTrader d.o.o. Podaci o postignutim cenama, procentualnim promenama i obimu su prikazani na mesečnom nivou. Cene su izražene u lokalnim valutama. Uprkos pažljivom preuzimanju i pribavljanju podataka, TeleTrader d.o.o. ne preuzima nikakvu odgovornost za ispravnost, potpunost ili tačnost informacija.

TeleTrader Professional

The Professional Trader's Workstation

Profesionalna platforma za analizu berzanskih podataka

<http://professional.teletrader.com/>

PREUZMITE
BESPLATNU
DEMO
VERZIJU