

# Bilten

BEOGRADSKA  
BERZA

Godina XXV  
Broj 310  
Novembar 2020.

## MESEČNI PROMET / MONTHLY TURNOVER

TRŽIŠNI SEGMENT / MARKET SEGMENT	Promet RSD / Turnover RSD	Promena % / % Change (RSD)*	Promet EUR / Turnover EUR	Promena % / % Change (EUR)*	Broj transakcija / No of Transactions
PRIME LISTING-akcije	29,258,137	-1.81%	248,847	-1.80%	690
PRIME LISTING-obveznice Republike Srbije	2,593,239,171	-4.08%	22,055,743	-4.07%	13
STANDARD LISTING-akcije	74,786,144	+115.53%	636,061	+115.53%	164
OPEN MARKET-akcije	17,597,428	-84.95%	149,674	-84.95%	109
MTP-akcije	69,874,336	+10.33%	594,306	+10.34%	313

\* mesečna promena / \* monthly change

METODE TRGOVANJA / TRADING METHODS	Promet RSD / Turnover RSD	Promena % / % Change (RSD)*	Promet EUR / Turnover EUR	Promena % / % Change (EUR)*	Broj transakcija / No of Transactions
Kontinuirano trgovanje / Continuous trading method	2,782,811,216	-5.39%	23,668,097	-5.38%	1,288
Blok trgovanja / Block trading	1,944,000	-72.11%	16,534	-72.11%	1
Ukupno / Total	2,784,755,216	-5.54%	23,684,631	-5.54%	1,289

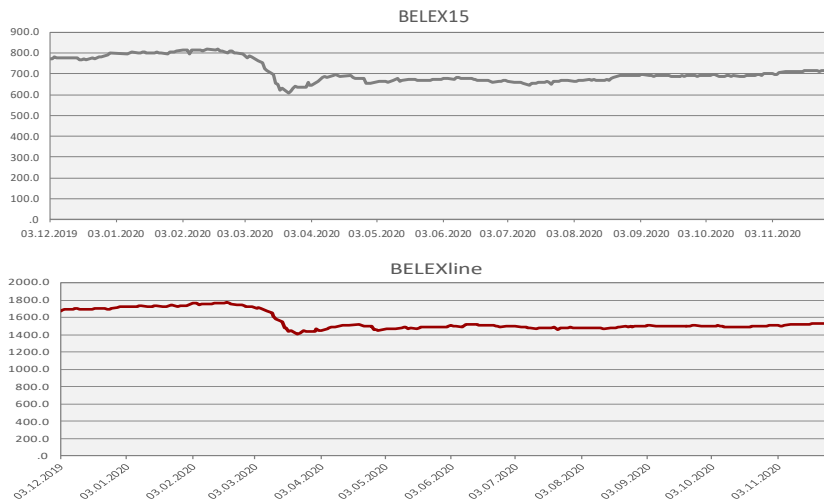
\* mesečna promena / \* monthly change

STRUKTURA TRGOVANJA / TRADING STRUCTURE	Učešće u ukupnom prometu / Total Turnover	Učešće u ukupnom broju transakcija / Total No. Of Trades	Učešće u prometu akcijama / Turnover - Shares	Učešće u broju transakcija akcijama / No of Trades - Shares
Regulisano tržište / Regulated Market	97.49%	75.72%	63.52%	75.47%
MTP	2.51%	24.28%	36.48%	24.53%
METODE TRGOVANJA / TRADING METHODS				
Kontinuirano trgovanje / Continuous trading	99.93%	99.92%	98.98%	99.92%
Blok trgovanja / Block trading	0.07%	0.08%	1.02%	0.08%
VRSTE HOV / SECURITY TYPE				
Akcije / Shares	6.88%	98.99%	-	-
Obveznice Republike Srbije / RS Bonds	93.12%	1.01%	-	-
Korporativne obveznice / Corporate Bonds	0.00%	0.00%	-	-
INDEKSI / INDICES				
BELEX15	4.21%	69.67%	61.21%	70.38%
BELEXline	4.36%	73.00%	63.46%	73.75%

## PROMET U PRETHODNIH 12 MESECI / TURNOVER IN PREVIOUS 12 MONTHS

Mesec / Month	Listing	Open Market	Regulisano / Regulated Market	MTP	Ukupno / Total	Br. Transakcija / No of Transactions
NOVEMBAR 2020	2,697,283,452	17,597,428	2,714,880,880	69,874,336	2,784,755,216	1,289
OKTOBAR 2020	2,767,941,193	116,908,135	2,884,849,328	63,331,505	2,948,180,833	1,463
SEPTEMBAR 2020	3,451,939,927	10,300,290	3,462,240,217	41,511,949	3,503,752,166	1,009
AVGUST 2020	769,981,610	25,293,837	795,275,447	23,454,407	818,729,854	1,167
JUL 2020	2,732,815,873	33,352,111	2,766,167,984	29,191,898	2,795,359,882	1,238
JUN 2020	1,284,277,059	61,939,404	1,346,216,463	18,295,881	1,364,512,344	1,862
MAJ 2020	3,095,888,499	54,226,931	3,150,115,430	3,021,914	3,153,137,344	1,384
APRIL 2020	5,307,696,037	103,385,875	5,411,081,912	11,449,781	5,422,531,693	1,039
MART 2020	9,030,036,635	131,788,131	9,161,824,766	267,102,814	9,428,927,580	2,180
FEBRUAR 2020	5,854,541,955	538,203,366	6,392,745,321	80,558,729	6,473,304,050	1,718
JANUAR 2020	4,298,544,657	66,229,693	4,364,774,350	687,189,262	5,051,963,612	1,826
DECEMBAR 2019	9,839,474,538	23,568,588	9,863,043,126	43,301,493	9,906,344,619	2,222

BELEX15	BELEX15	BELEXline
Vrednost / Value	713.57	1,523.76
% Promena / % Change	+ 1.68%	+ 1.13%
Promena / Change	+ 11.81	+ 16.99
Promet/ Turnover	117,233,342	121,532,614
Vrednost na dan 30.10.2020.	703.98	1,508.24
Najviša vrednost/ Maximum	717.73	1,530.71
Najniža vrednost/ Minimum	691.71	1,500.00
Godišnja promena / Annual change	-10.99%	-11.76%
PE	8.69	8.92
PB	0.66	0.60
FIS	50.92	49.51
b-FIS	75.66	73.75
s-FIS	26.18	25.27



MESEČNI PREGLED PO HARTIJAMA IZ KORPE INDEKSA BELEX15 / STATISTICS BY BELEX15 BASKET SECURITIES

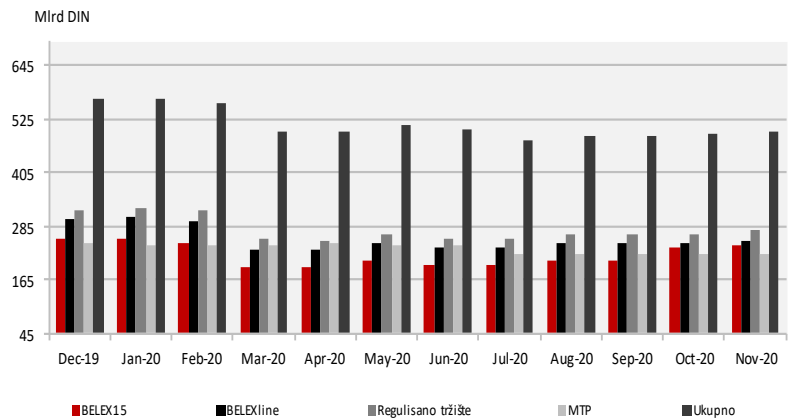
	AERO	ALFA	DNOS	ENHL
Poslednja cena / Last Price	928	23,000	3,450	380
Broj transakcija / No. of Trades	298	3	2	4
Obim trgovanja / Volume	3,171	117	17	877
Vrednost prometa / Turnover RSD	2,957,235	2,691,000	59,150	333,260
Vrednost prometa EUR / Turnover EUR	25,152	22,888	503	2,834
Tržišna kapitalizacija / Market Cap	32,504,247,712	3,618,636,000	14,580,117,450	4,153,890,960
Tržišna kapitalizacija EUR / Market Cap EUR	276,438,506	30,775,372	123,999,359	35,327,549
Prosek prometa RSD / Average Turnover RSD	147,861.75	134,550.00	2,957.50	16,663.00
Prosek prometa EUR / Average Turnover EUR	1,257.60	1,144.42	25.15	141.72
Prosek broja transakcija / Average No. of Trades	14.90	0.15	0.10	0.20
FIS	36.42%	0.00%	0.00%	12.94%
b-FIS	72.84%	%	%	25.88%
s-FIS	%	%	%	%

	FINT	FITO	IMPL	JESV
Poslednja cena / Last Price	601	2,550	3,599	6,800
Broj transakcija / No. of Trades	11	15	13	48
Obim trgovanja / Volume	580	2,679	673	801
Vrednost prometa / Turnover RSD	351,288	6,832,350	2,375,842	5,483,692
Vrednost prometa EUR / Turnover EUR	2,988	58,114	20,207	46,643
Tržišna kapitalizacija / Market Cap	15,932,814,106	6,732,000,000	3,391,290,913	1,734,884,000
Tržišna kapitalizacija EUR / Market Cap EUR	135,503,623	57,253,564	28,841,873	14,754,648
Prosek prometa RSD / Average Turnover RSD	17,564.40	341,617.50	118,792.10	274,184.60
Prosek prometa EUR / Average Turnover EUR	149.39	2,905.69	1,010.36	2,332.15
Prosek broja transakcija / Average No. of Trades	0.55	0.75	0.65	2.40
FIS	35.02%	1.68%	0.00%	4.35%
b-FIS	%	3.36%	%	8.70%
s-FIS	70.04%	%	%	%

	KMBN	MTLC	NIIS	TGAS
Poslednja cena / Last Price	3,000	1,811	575	14,000
Broj transakcija / No. of Trades	94	22	377	11
Obim trgovanja / Volume	22,214	1,127	44,862	88
Vrednost prometa / Turnover RSD	67,228,961	2,073,491	25,616,354	1,230,719
Vrednost prometa EUR / Turnover EUR	571,783	17,636	217,873	10,468
Tržišna kapitalizacija / Market Cap	50,453,868,000	3,694,440,000	93,759,730,000	14,513,212,000
Tržišna kapitalizacija EUR / Market Cap EUR	429,094,438	31,420,062	797,397,310	123,430,349
Prosek prometa RSD / Average Turnover RSD	3,361,448.05	103,674.55	1,280,817.70	61,535.95
Prosek prometa EUR / Average Turnover EUR	28,589.13	881.79	10,893.63	523.38
Prosek broja transakcija /	4.70	1.10	18.85	0.55
FIS	59.98%	7.22%	68.82%	0.00%
b-FIS	98.52%	9.82%	75.41%	%
s-FIS	21.43%	4.63%	62.23%	%

## TRŽIŠNA KAPITALIZACIJA / MARKET CAPITALIZATION

	U hiljadama / In thousands RSD	U hiljadama / In thousands EUR
Ukupno/Total	497,531,297	4,231,349
Regulisano tržište/Regulated Market	274,919,690	2,338,106
Listing	202,233,875	1,719,936
Prime Listing –akcije / shares	146,350,683	1,244,667
Standard Listing-akcije / shares	55,883,192	475,269
Open Market	72,685,816	618,170
MTP	222,611,607	1,893,242
BELEX15	245,220,384	2,085,523
BELEXline	254,500,091	2,164,444



## SEKTORSKA KLASIFIKACIJA – AKCIJE / SECTOR CLASSIFICATION – SHARES

Sektor / Sector	Promet – Akcije / Turnover - Shares	Br. transakcija – Akcije / No. Of Trades - Shares	Tržišna kapitalizacija / Market Capitalization	FIS
Prerađivačka industrija	18,002,054	102	173,428,152,077	4.64%
Rudarstvo	25,616,354	377	94,407,858,719	68.82%
Finansijske delatnosti i delatnost osiguranja	72,123,698	156	77,354,737,643	56.18%
Trgovina na veliko i malo i popravka motornih vozila	9,953,050	10	40,540,921,051	0.00%
Poslovanje nekretninama	2,957,235	298	33,962,647,010	36.42%
Građevinarstvo	6,864,295	63	25,007,509,597	4.57%
Snabdevanje električnom energijom, gasom i parom	351,288	11	15,932,814,106	35.02%
Poljoprivreda, šumarstvo i ribarstvo	44,826,086	212	14,069,538,713	7.34%
Saobraćaj i skladištenje	874,320	22	12,147,768,439	9.04%
Usluge smeštaja i ishrane		0	3,957,274,006	0.00%
Stručne, naučne, inovacione i tehničke delatnosti	10,490	1	3,373,267,216	0.00%
Informisanje i komunikacije	4,939,918	14	2,075,741,336	0.00%
Administrativne i pomoćne uslužne delatnosti	2,488,057	9	731,662,293	0.00%
Obrazovanje	2,509,200	1	203,830,124	0.00%
Ostale uslužne delatnosti		0	173,506,500	0.00%
Umetnost, zabava i rekreacija		0	102,219,000	0.00%
Snabdevanje vodom i upravljanje otpadnim vodama		0	58,057,137	0.00%
Zdravstvena i socijalna zaštita		0	3,792,040	0.00%

## UČEŠĆE ČLANOVA U PROMETU / PARTICIPATION OF STOCK EXCHANGE MEMBERS IN THE TURNOVER

### REGULISANO TRŽIŠTE / REGULATED MARKET

Član Berze / Member	Udeo u prometu / Participation in Turnover (%)	Udeo u broju transakcija / Participation in No. Of Transactions (%)
Erste bank a.d., Novi Sad	49.79%	1.13%
Mediolanum invest a.d., Beograd	15.18%	0.92%
Raiffeisen banka a.d., Beograd	13.63%	3.02%
Komercijalna banka a.d., Beograd	9.71%	15.52%
M&V Investments a.d., Beograd	5.06%	4.25%
Vojvođanska banka a.d., Novi Sad	3.74%	6.71%
Dunav Stockbroker a.d., Beograd	1.61%	13.99%
Momentum Securities a.d., Novi Sad	0.32%	5.12%
Intercity broker a.d., Beograd	0.29%	3.53%
Ilirika investments a.d., Beograd	0.25%	4.61%
Ostali	0.43%	41.19%

### MTP

Član Berze / Member	Udeo u prometu / Participation in Turnover (%)	Udeo u broju transakcija / Participation in No. Of Transactions (%)
Tesla Capital a.d., Beograd	47.01%	25.96%
Convst a.d., Novi Sad	11.85%	14.26%
Komercijalna banka a.d., Beograd	11.12%	12.66%
Momentum Securities a.d., Novi Sad	8.67%	5.29%
Intercity broker a.d., Beograd	6.42%	11.54%
Euro fineks broker a.d., Beograd	5.20%	4.17%
Vojvođanska banka a.d., Novi Sad	3.23%	9.94%
Ilirika investments a.d., Beograd	2.32%	6.73%
Banka Poštanska štedionica a.d., Beograd	1.22%	1.44%
M&V Investments a.d., Beograd	0.72%	1.12%
Ostali	2.25%	6.89%

**UČEŠĆE STRANIH INVESTITORA / FOREIGN INVESTORS PARTICIPATION—FIT, FIS, FIB**

Mesec / Month	FIT	FIS	b-FIS	s-FIS	FIB
NOVEMBAR 2020	5.80%	33.35%	50.55%	16.14%	3.76%
OKTOBAR 2020	19.24%	22.70%	22.10%	23.30%	18.92%
SEPTEMBAR 2020	2.65%	37.18%	35.12%	39.25%	1.38%
AVGUST 2020	36.27%	54.57%	36.65%	72.48%	12.91%
JUL 2020	11.33%	37.77%	35.34%	40.20%	10.00%
JUN 2020	36.22%	47.86%	36.49%	59.23%	33.22%
MAJ 2020	6.15%	28.74%	23.40%	34.07%	4.17%
APRIL 2020	20.63%	34.99%	29.08%	40.90%	19.88%
MART 2020	13.06%	26.78%	20.15%	33.40%	12.06%
FEBRUAR 2020	13.76%	14.81%	11.82%	17.80%	13.61%
JANUAR 2020	23.00%	44.91%	6.14%	83.67%	18.28%
DECEMBAR 2019	3.05%	34.56%	59.67%	9.45%	2.17%

Prema specifikaciji klijenata Centralnog registra / According to the Central depository clients

**NAJVEĆE PROMENE CENE, REGULISANO TRŽIŠTE / BIGGEST PRICE CHANGES, REGULATED MARKET**

Izdavalac / Issuer	Cena / Price 30.11.2020.	Cena / Price 30.10.2020.	Promena % / % Change	Izdavalac / Issuer	Cena / Price 30.11.2020.	Cena / Price 30.10.2020.	Promena % / % Change
Globos osiguranje a.d., Beograd, GLOS	449	400	+ 12.25%	Tigar a.d., Pirot, TIGR	20	24	-16.67%
Komercijalna banka a.d., Beograd, KMBNPB	951	852	+ 11.62%	Metalac a.d., Gornji Milanovac, MTLC	1,811	1,900	-4.68%
NIS a.d., Novi Sad, NIIS	575	549	+ 4.74%	Fintel energija a.d., Beograd, FINT	601	615	-2.28%
Messer Tehnogas a.d., Beograd, TGAS	14,000	13,500	+ 3.70%	Philip Morris Operations a.d., Niš,	6,400	6,450	-0.78%
Komercijalna banka a.d., Beograd, KMBN	3,000	2,900	+ 3.45%	Jedinstvo a.d., Sevojno, JESV	6,800	6,830	-0.44%

**NAJVEĆA VREDNOST PROMETA, REGULISANO TRŽIŠTE / BIGGEST TURNOVER, REGULATED MARKET**

Izdavalac / Issuer	Vrednost prometa / Turnover	Blok trgovanja / Block Trades	Izdavalac / Issuer	Vrednost prometa / Turnover	Blok trgovanja / Block Trades
Komercijalna banka a.d., Beograd, KMBN	67,228,961	0	Philip Morris Operations a.d., Niš, DINNPB	2,771,828	0
NIS a.d., Novi Sad, NIIS	25,616,354	0	Alfa plam a.d., Vranje, ALFA	2,691,000	0
Galenika Fitofarmacija a.d., Zemun, FITO	6,832,350	0	Impol Seval a.d., Sevojno, IMPL	2,375,842	0
Jedinstvo a.d., Sevojno, JESV	5,483,692	0	Metalac a.d., Gornji Milanovac, MTLC	2,073,491	0
Aerodrom Nikola Tesla a.d., Beograd, AERO	2,957,235	0	Messer Tehnogas a.d., Beograd, TGAS	1,230,719	0

**NAJNIŽI P/E, REGULISANO TRŽIŠTE /  
LOWEST P/E, REGULATED MARKET**

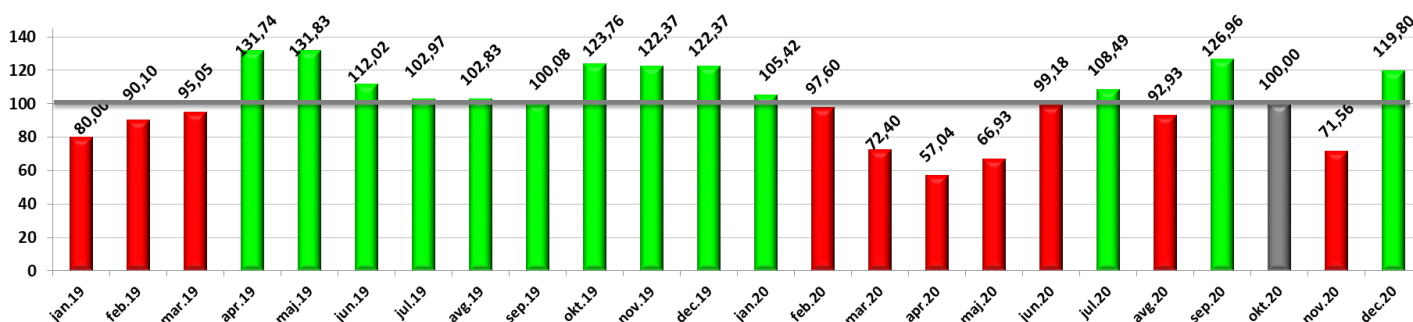
Izdavalac / Issuer	P/E	Izdavalac / Issuer	P/E
Dunav osiguranje a.d., Beograd	4.86	Messer Tehnogas a.d., Beograd	8.11
Jedinstvo a.d., Sevojno	5.09	VP Dunav a.d., Bačka Palanka	8.12
NIS a.d., Novi Sad	5.30	Galenika Fitofarmacija a.d., Zemun	9.79
Komercijalna banka a.d., Beograd	5.76	Kopaonik a.d., Beograd	12.05
Impol Seval a.d., Sevojno	6.72	Metalac a.d., Gornji Milanovac	13.35

**NAJNIŽI P/B, REGULISANO TRŽIŠTE /  
LOWEST P/B, REGULATED MARKET**

Izdavalac / Issuer	P/B	Izdavalac / Issuer	P/B
ALTA banka a.d., Beograd	0.32	Energoprojekt holding a.d.,	0.46
NIS a.d., Novi Sad	0.36	Impol Seval a.d., Sevojno	0.50
Lasta a.d., Beograd	0.37	Jedinstvo a.d., Sevojno	0.62
Kopaonik a.d., Beograd	0.40	Komercijalna banka a.d., Beograd	0.68
Alfa plam a.d., Vranje	0.44	Messer Tehnogas a.d., Beograd	0.78

**NAJVEĆA TRŽIŠNA KAPITALIZACIJA, REGULISANO TRŽIŠTE / BIGGEST MARKET CAPITALIZATION, REGULATED MARKET**

Izdavalac / Issuer	Simbol	Tržišna kapitalizacija - mil RSD / Market Capitalization—mil RSD	FFc	Izdavalac / Issuer	Simbol	Tržišna kapitalizacija - mil RSD / Market Capitalization—mil RSD	FFc
NIS a.d., Novi Sad	NIIS	93,759,730	0.14	Dunav osiguranje a.d., Beograd	DNOS	14,580,117	0.06
Komercijalna banka a.d., Beograd	KMBN	50,453,868	0.17	Messer Tehnogas a.d., Beograd	TGAS	14,513,212	0.18
Aerodrom Nikola Tesla a.d., Beograd	AERO	32,504,248	0.15	Galenika Fitofarmacija a.d., Zemun	FITO	6,732,000	0.28
Philip Morris Operations a.d., Niš	DINNPB	21,176,115	0.11	Energoprojekt holding a.d., Beograd	ENHL	4,153,891	0.15
Fintel energija a.d., Beograd	FINT	15,932,814	0.06	Metalac a.d., Gornji Milanovac	MTLC	3,694,440	0.81

**BELEXsentiment**


## LISTING

## PRIME LISTING—AKCIJE / SHARES

Izdavalac / Issuer	Simbol / Symbol	Cena / Price	Mesečna promena % / Monthly Change %	Obim / Volume	Promet (RSD) / Turnover (RSD)	Raspon cene-52 nedelje / 52 Weeks High/Low	Broj emitovanih akcija / Number of Shares Issued	%Prinos (dividenda) / Dividend	P/E	P/B
Aerodrom Nikola Tesla a.d., Beograd	AERO	928	+ 1.31%	3,171	2,957,235	710 - 1,100	35,026,129	1.40	-71.62	1.10
Energoprojekt holding a.d., Beograd	ENHL	380	0.00%	877	333,260	380 - 730	10,931,292	0.00	-146.98	0.46
Fintel energija a.d., Beograd	FINT	601	-2.28%	580	351,288	530 - 670	26,510,506	0.00	-281.75	34.21
NIS a.d., Novi Sad	NIS	575	+ 4.74%	44,862	25,616,354	490 - 760	163,060,400	0.06	5.30	0.36

## PRIME LISTING—OBVEZNICE RS / RS BONDS

Simbol / Symbol	Cena / Price	Mesečna promena %	Promet RSD / Turnover RSD	Mesečni raspon cene / Monthly High/Low
RSO16142	110.4924	-0.2576%	220,984,800	110.4924-110.4924
RSO18171	108.4161	+ 0.1157%	433,664,400	108.4161-108.4161
RSO19181	112.1994	+ 0.7413%	583,436,880	112.1994-112.1994
RSO19184	101.8406	-0.3171%	229,165,795	101.8406-101.8406
RSO20190	102.1754	-1.0862%	510,877,000	102.1754-102.1754
RSO20191	109.9284	+ 0.2056%	509,150,906	109.9013-110.6420
RSO20192	100.2555	+ 0.1322%	104,902,328	100.2555-100.2555
RSSDS20225	95.0000	+ 1.0638%	363,794	95.0000-95.0000
RSSDS20226	94.5000	+ 2.7174%	693,267	94.0000-94.5000

## STANDARD LISTING—AKCIJE / SHARES

Izdavalac / Issuer	Simbol / Symbol	Cena / Price	Mesečna promena % / Monthly Change %	Obim / Volume	Promet (RSD) / Turnover (RSD)	Raspon cene-52 nedelje / 52 Weeks High/Low	Broj emitovanih akcija / Number of Shares Issued	%Prinos (dividenda) / Dividend	P/E	P/B
Jedinstvo a.d., Sevojno	JESV	6,800	-0.44%	801	5,483,692	5,500 - 7,020	255,130	0.09	5.09	0.62
Komercijalna banka a.d., Beograd	KMBN	3,000	+ 3.45%	22,214	67,228,961	2,150 - 3,380	16,817,956	0.00	5.76	0.68
Metalac a.d., Gornji Milanovac	MTLC	1,811	-4.68%	1,127	2,073,491	1,750 - 2,200	2,040,000	0.04	13.35	1.10

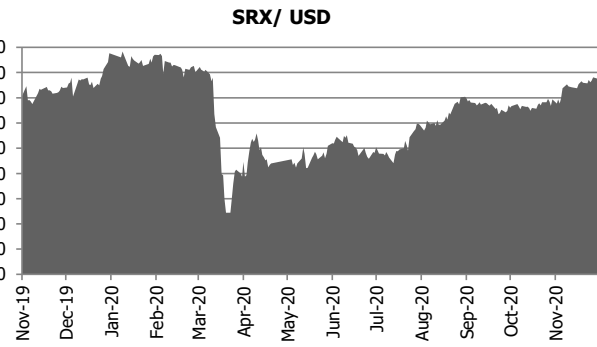
## OPEN MARKET

Izdavalac / Issuer	Simbol / Symbol	Cena / Price	Mesečna promena % / Monthly Change %	Obim / Volume	Promet (RSD) / Turnover (RSD)	Raspon cene-52 nedelje / 52 Weeks High/Low	Broj emitovanih akcija / Number of Shares Issued	Tržišna kapitalizacija / Market Capitalization
Alfa plam a.d., Vranje	ALFA	23,000	0.00%	117	2,691,000	23000-27210	157,332	3,618,636
Philip Morris Operations a.d., Niš	DINNPB	6,400	-0.78%	432	2,771,828	4200-6500	3,308,768	21,176,115
Dunav osiguranje a.d., Beograd	DNOS	3,450	0.00%	17	59,150	3000-4000	4,226,121	14,580,117
Galenika Fitofarmacija a.d., Zemun	FITO	2,550	+ 2.00%	2,679	6,832,350	2400-3030	2,640,000	6,732,000
Globos osiguranje a.d., Beograd	GLOS	449	+ 12.25%	370	149,626	300-599	1,369,237	614,787
Impol Seval a.d., Sevojno	IMPL	3,599	+ 2.77%	673	2,375,842	3000-4000	942,287	3,391,291
ALTA banka a.d., Beograd	JMBN	4,450	0.00%	92	409,400	4001-7000	288,330	1,283,069
Komercijalna banka a.d., Beograd	KMBNPB	951	+ 11.62%	379	347,970	610-1150	373,510	355,208
Kopaonik a.d., Beograd	KOPB	7,101	+ 0.01%	3	21,303	6400-7101	138,906	986,372
Messer Tehnogas a.d., Beograd	TGAS	14,000	+ 3.70%	88	1,230,719	10300-16000	1,036,658	14,513,212
Tigar a.d., Pirot	TIGR	20	-16.67%	12	240	20-59	8,156,236	163,125
VP Dunav a.d., Bačka Palanka	VPDU	12,000	0.00%	59	708,000	11050-14000	10,216	122,592

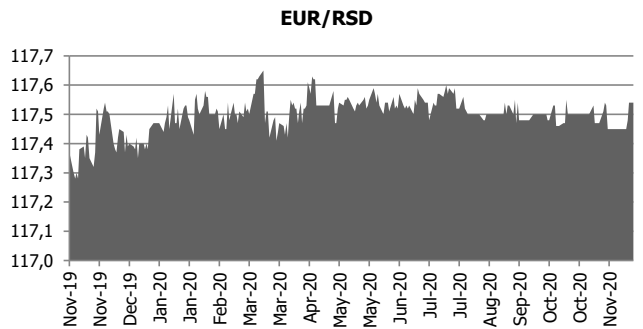
## AKCIJE

Izdavalac	Simbol	Cena	Mesečna promena %	Obim	Promet (DIN)	Raspon cene-52 nedelje	Broj emitovanih akcija	Tržišna kapitalizacija
Auto kuća 21. maj a.d., Beograd	AKDM	400	+ 14.29%	342	136,800	350-400	355,803	142,321
AMS Osiguranje a.d., Beograd	AMSO	1,200	+ 18.23%	1,268	1,521,600	600-1200	314,550	377,460
Aquatus a.d., Beograd	AQUA	108	0.00%	193	20,844	106-108	237,718	25,674
BAS a.d., Beograd	BASB	801	0.00%	320	256,320	746-801	311,187	249,261
Čoka duvanska industrija a.d., Čoka	COKA	9,708	+ 0.01%	80	776,577	9707-10004	39,630	384,728
Đuro Salaj a.d., Beograd	DJRS	3,600	0.00%	697	2,509,200	3600-3600	30,244	108,878
Dimničar a.d., Beograd	DMNR	8,001	+ 0.01%	68	544,057	8000-8001	4,500	36,005
Fabrika opruga Čačak a.d., Čačak	FOCA	162	0.00%	23	3,726	162-162	29,059	4,708
Goša montaža a.d., Beograd	GMON	1,900	-13.64%	10	19,000	1800-2250	221,138	420,162
Geosonda - Fundiranje a.d., Beograd	GSFD	660	+ 8.20%	90	59,400	500-677	76,336	50,382
Iritel a.d., Beograd	IRTL	1,049	+ 4.90%	10	10,490	999-1494	290,104	304,319
Jugoprevoz Kruševac a.d., Kruševac	JGPK	2,300	0.00%	200	460,000	2300-2900	76,138	175,117
Luka Leget a.d., Sremska Mitrovica	LKLG	2,000	+ 25.00%	79	158,000	1000-2000	200,913	401,826
Omoljica a.d., Omoljica	OMOL	950	+ 18.75%	2,370	1,929,822	780-950	326,875	310,531
PP Miletić a.d., Srpski Miletić	PMLT	4,000	+ 361.36%	8,498	31,212,394	1301-4001	201,924	807,696
Preduzeće za puteve Valjevo a.d., Valjevo	PPVA	2,000	+ 23.00%	229	462,525	1400-2600	201,904	403,808
Partenon M.A.M. Sistem a.d., Beograd	PTNN	1,342	-17.42%	3,290	4,415,180	1342-1342	26,736	35,880
Putevi a.d., Užice	PUUE	66	-39.45%	283	18,678	66-179	982,241	64,828
Ratar a.d., Pančevo	RTAR	800	0.00%	200	160,000	798-800	122,625	98,100
Rudo a.d., Beograd	RUDO	155	0.00%	471	73,005	150-157	666,051	103,238
Lučić Prigrevica a.d., Novi Sad	SJPR	550	+ 10.00%	317	174,350	500-570	717,968	394,882
Stari Tamiš a.d., Pančevo	STTM	4,510	+ 1.35%	2,552	11,509,520	4000-4510	395,815	1,785,126
Min Div a.d., Svrlijig	SVRL	605	-6.92%	681	410,900	600-706	948,073	573,584
Savremena administracija a.d., Beograd	SVRME	4,100	-2.38%	131	524,738	2500-4200	169,877	696,496
Tehnohemija a.d., Beograd	THHM	300	0.00%	40,980	9,442,000	141-300	1,024,544	307,363
Termika-Beograd a.d., Beograd	TRBG	4,000	+ 14.29%	33	132,000	3300-4950	60,924	243,696
Uniprom a.d., Novi Pazar	UNPR	750	0.00%	499	374,250	500-750	201,890	151,418
Utva silosi a.d., Kovin	UTSI	1,600	+ 6.67%	65	112,000	1251-2000	186,979	299,166
Voda Vrnjci a.d., Vrnjačka Banja	VDAV	3,350	-4.29%	130	435,510	3350-4970	114,787	384,536
Vital a.d., Vrbas	VITL	950	0.00%	71	67,450	650-960	763,937	725,740

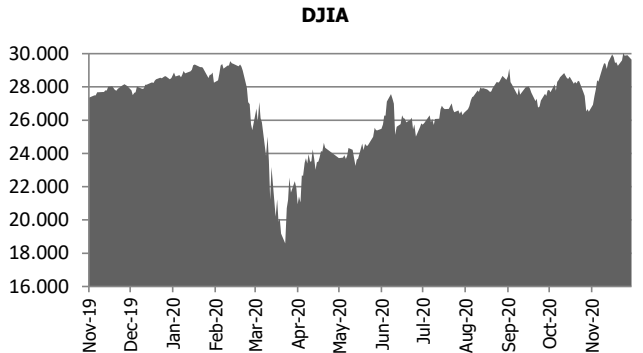
Stock Indices	LAST	YTD Change	YoY Change	Monthly Change
SRX USD	212,51	-2,36%	10,86%	3,94%
DJ BALKAN 50	424,42	-15,82%	43,73%	13,81%
CECE BANKING	1024,01	-26,02%	46,85%	24,87%
DJ Stoxx 50	3074,64	-9,65%	24,86%	11,58%
Eurotop 100	2850,77	-9,55%	24,18%	12,61%
FTSE 100	6504,9	6,43%	22,07%	10,99%
Xetra DAX	13223,16	-0,20%	23,85%	13,05%
S&P 500	3647,49	0,95%	27,06%	1,74%
DJ Industrial	29861,55	0,99%	23,54%	10,58%
Nikkei 225	26687,84	12,81%	11,09%	5,13%



FX & MM Rates	BID	Monthly High	Monthly Low	Monthly Change
EUR/USD	1,2143	1,2177	1,1927	2,36%
EUR/GBP	0,9107	0,9229	0,893	-0,47%
EUR/CHF	1,0769	1,0871	1,0739	1,46%
EUR/RSD	117,50	117,6	117,58	0,03%
EUR/JPY	126,33	126,73	124,41	2,02%
3M Euro Deposit	0,53	0,66	0,25	0,57%
3M RSD Deposit	9,99	12,19	9,10	4,81%

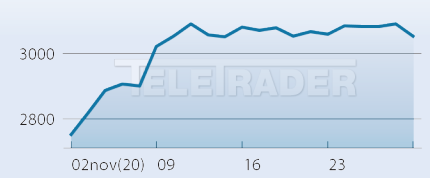


Commodities	LAST	Units	Monthly Change
Gold	1827,17	\$/oz	-5,68%
Silver	23,82	\$/oz	-4,54%
LME Copper	CU 7763.0/63.0 1	\$/ton	7,24%
LME Aluminum	AL 2042.5/42.5 1	\$/ton	12,03%
IPE Brent	50,29	\$/bbl	21,29%
IPE Gasoil	410,50	\$/ton	21,19%
CBOT Wheat	596,50	USc/bsh	-3,15%
CBOT Corn	424,00	USc/bsh	5,06%
CBOT Soybean	1169,50	USc/bsh	9,58%
CBOT Soymeal	380,70	USD/ton	3,69%
LIFFE Coffee	1349,00	USD/ton	4,43%
LIFFE Sugar	390,30	USD/ton	2,08%



Debt -- CDS	LAST	Term	S&P	Moody's
UNITED KINGDOM	18,52	5Y	AA	Aa2
GERMANY	10,57	5Y	AAA	Aaa
SPAIN	47,30	5Y	A	Baa1
UKRAINE	385,79	5Y	B	Caa1
ROMANIA	66,84	5Y	BBB-	Baa3
HUNGARY	64,53	5Y	BBB	Baa3
CROATIA	67,34	5Y	BBB-	Ba2
JAPAN	14,73	5Y	A+	A1
CHINA	46,80	5Y	A+	A1
ARGENTINA	8312,69	5Y	SD	Caa2
BRAZIL	149,20	5Y	BB-	Ba2
MEXICO	90,06	5Y	A-	A3

## DJ STOXX 50 Vrednost 3.054,19



### ↑ DOBITNICI

IME	CENA	PROMENA%	OBIM
AXA S.A. INH. EO 2	19,96	45,40%	360.304
BNP PARIBAS INH. EO 2	43,18	45,36%	40.450
AIRBUS	89,04	42,62%	246.673
TOTAL S.E. EO 2	36,52	42,32%	168.786
INTESA SANPAOLO	1,94	38,31%	155.987

### ↓ GUBITNICI

IME	CENA	PROMENA%	OBIM
NATIONAL GRID PLC	9,58	-6,54%	23.074
RECKITT BENCK.GRP LS -	75,00	-0,85%	19.366
NOVO-NORDISK NAM.B	55,74	0,27%	56.845
ASTRAZENECA PLC DL-	89,25	2,59%	93.460
UNILEVER PLC LS-	51,10	3,29%	25.559

## Crobex Vrednost 1.702,37



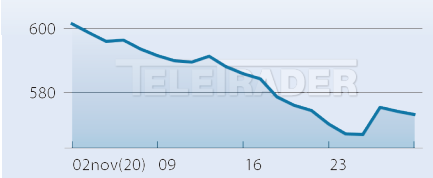
### ↑ DOBITNICI

IME	CENA	PROMENA%	OBIM
Valamar Riviera d.d.	27,60	20,00%	926.365
Zagrebačka banka d.d. -	54,00	8,22%	96.885
OT - Optima Telekom d.d.	5,06	7,66%	567.614
HPB d.d. - redovne dionice	454,00	3,65%	2.492
Đuro Đaković holding d.d.	4,05	-0,49%	741.233

### ↓ GUBITNICI

IME	CENA	PROMENA%	OBIM
Đuro Đaković holding d.d.	4,05	-0,49%	741.233
HPB d.d. - redovne dionice	454,00	3,65%	2.492
OT - Optima Telekom d.d.	5,06	7,66%	567.614
Zagrebačka banka d.d. -	54,00	8,22%	96.885
Valamar Riviera d.d.	27,60	20,00%	926.365

## BIRS Vrednost 573,03



### ↑ DOBITNICI

IME	CENA	PROMENA%	OBIM
Telekom Srpske a.d.	0,99	-1,78%	1.619.081

### ↓ GUBITNICI

IME	CENA	PROMENA%	OBIM
Telekom Srpske a.d.	0,99	-1,78%	1.619.081

## SBI TOP Vrednost 888,80



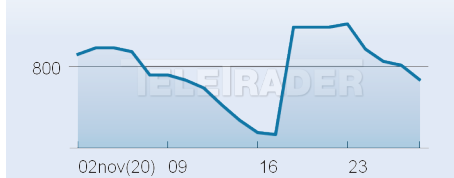
### ↑ DOBITNICI

IME	CENA	PROMENA%	OBIM
NLB	47,00	37,83%	134.307
KRKA	88,20	14,55%	146.147
POZAVAROVALNICA SAVA	18,30	11,59%	141.229
LUKA KOPER	19,10	10,40%	29.828
PETROL	326,00	7,95%	8.914

### ↓ GUBITNICI

IME	CENA	PROMENA%	OBIM
TELEKOM SLOVENIJE	44,60	4,69%	33.633
ZAVAROVALNICA TRIGLAV	29,20	7,75%	55.338
PETROL	326,00	7,95%	8.914
LUKA KOPER	19,10	10,40%	29.828
POZAVAROVALNICA SAVA	18,30	11,59%	141.229

## SASX10 Vrednost 797,09



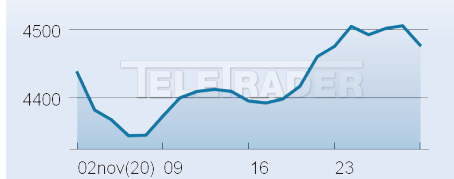
### ↑ DOBITNICI

IME	CENA	PROMENA%	OBIM
BOSNALIJEK D.D.	17,50	-0,06%	3.052
BH TELECOM D.D.	8,80	-2,22%	5.711
SARAJEVO OSIGURANJE	14,65	-8,44%	3.264

### ↓ GUBITNICI

IME	CENA	PROMENA%	OBIM
SARAJEVO OSIGURANJE	14,65	-8,44%	3.264
BH TELECOM D.D.	8,80	-2,22%	5.711
BOSNALIJEK D.D.	17,50	-0,06%	3.052

## MBI10 Vrednost 4.477,94



### ↑ DOBITNICI

IME	CENA	PROMENA%	OBIM
Komercijalna banka	7.049,00	3,66%	11.487
Stopanska banka Skopje	1.111,00	1,93%	10.939
Alkaloid Skopje	12.500,00	1,63%	3.719
Makpetrol Skopje	69.500,00	0,72%	143
NLB Banka Skopje	18.500,00	-1,33%	2.784

### ↓ GUBITNICI

IME	CENA	PROMENA%	OBIM
NLB Banka Skopje	18.500,00	-1,33%	2.784
Makpetrol Skopje	69.500,00	0,72%	143
Alkaloid Skopje	12.500,00	1,63%	3.719
Stopanska banka Skopje	1.111,00	1,93%	10.939
Komercijalna banka	7.049,00	3,66%	11.487

Tehnologiju i podatke obezbedio TeleTrader d.o.o. Podaci o postignutim cenama, procentualnim promenama i obimu su prikazani na mesečnom nivou. Cene su izražene u lokalnim valutama. Uprkos pažljivom preuzimanju i pribavljanju podataka, TeleTrader d.o.o. ne preuzima nikakvu odgovornost za ispravnost, potpunost ili tačnost informacija.

# TeleTrader Professional

## The Professional Trader's Workstation

Profesionalna platforma za analizu berzanskih podataka

<http://professional.teletrader.com/>

PREUZMITE  
BESPLATNU  
DEMO  
VERZIJU