

# Bilten

BEOGRADSKA  
BERZAGodina XXVI  
Broj 314  
Mart 2021.

## MESEČNI PROMET / MONTHLY TURNOVER

TRŽIŠNI SEGMENT / MARKET SEGMENT	Promet RSD / Turnover RSD	Promena % / % Change (RSD)*	Promet EUR / Turnover EUR	Promena % / % Change (EUR)*	Broj transakcija / No of Transactions
PRIME LISTING-akcije	74,266,362	+126.85%	631,658	+126.85%	888
PRIME LISTING-obveznice Republike Srbije	1,256,546,518	-72.45%	10,687,020	-72.45%	162
STANDARD LISTING-akcije	53,451,947	-89.20%	454,599	-89.20%	75
OPEN MARKET-akcije	144,884,876	+222.33%	1,232,296	+222.33%	244
MTP-akcije	198,744,779	+27.69%	1,690,375	+27.69%	441

\* mesečna promena / \* monthly change

METODE TRGOVANJA / TRADING METHODS	Promet RSD / Turnover RSD	Promena % / % Change (RSD)*	Promet EUR / Turnover EUR	Promena % / % Change (EUR)*	Broj transakcija / No of Transactions
Kontinuirano trgovanje / Continuous trading method	1,614,047,233	-69.36%	13,727,645	-69.36%	1,809
Blok trgovanja / Block trading	113,847,249	+447.37%	968,304	+447.38%	1
Ukupno / Total	1,727,894,482	-67.33%	14,695,949	-67.33%	1,810

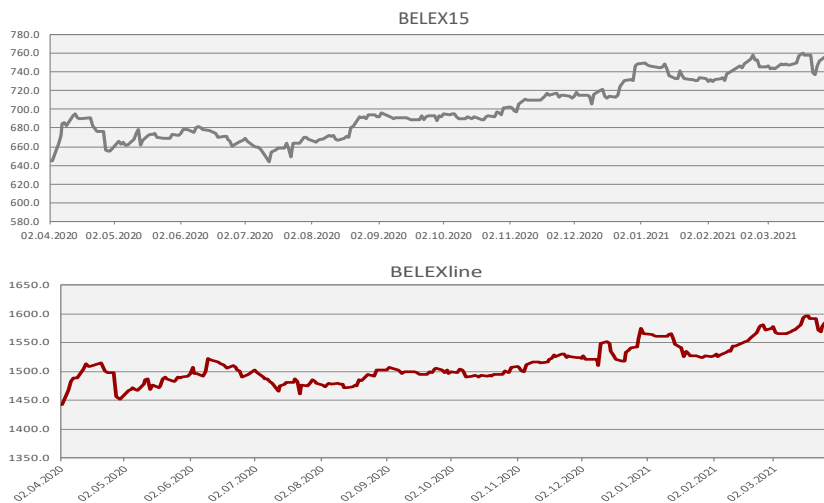
\* mesečna promena / \* monthly change

STRUKTURA TRGOVANJA / TRADING STRUCTURE	Učešće u ukupnom prometu / Total Turnover	Učešće u ukupnom broju transakcija / Total No. Of Trades	Učešće u prometu akcijama / Turnover - Shares	Učešće u broju transakcija akcijama / No of Trades - Shares
Regulisano tržište / Regulated Market	88.50%	75.64%	57.83%	73.24%
MTP	11.50%	24.36%	42.17%	26.76%
METODE TRGOVANJA / TRADING METHODS				
Kontinuirano trgovanje / Continuous trading	93.41%	99.94%	75.85%	99.94%
Blok trgovanja / Block trading	6.59%	0.06%	24.15%	0.06%
VRSTE HOV / SECURITY TYPE				
Akcije / Shares	27.28%	91.05%	-	-
Obveznice Republike Srbije / RS Bonds	72.72%	8.95%	-	-
Korporativne obveznice / Corporate Bonds	0.00%	0.00%	-	-
INDEKSI / INDICES				
BELEX15	10.08%	59.39%	36.93%	65.23%
BELEXline	16.52%	67.35%	60.57%	73.97%

## PROMET U PRETHODNIH 12 MESECI / TURNOVER IN PREVIOUS 12 MONTHS

Mesec / Month	Listing	Open Market	Regulisano / Regulated Market	MTP	Ukupno / Total	Br. Transakcija / No of Transactions
MART 2021	1,384,264,827	144,884,876	1,529,149,703	198,744,779	1,727,894,482	1,810
FEBRUAR 2021	5,088,160,062	44,949,749	5,133,109,811	155,648,215	5,288,758,026	1,857
JANUAR 2021	1,347,760,980	16,481,850	1,364,242,830	26,775,647	1,391,018,477	1,038
DECEMBAR 2020	4,574,035,074	288,316,813	4,862,351,887	144,728,160	5,007,080,047	1,923
NOVEMBAR 2020	2,697,283,452	17,597,428	2,714,880,880	69,874,336	2,784,755,216	1,289
OKTOBAR 2020	2,767,941,193	116,908,135	2,884,849,328	63,331,505	2,948,180,833	1,463
SEPTEMBAR 2020	3,451,939,927	10,300,290	3,462,240,217	41,511,949	3,503,752,166	1,009
AVGUST 2020	769,981,610	25,293,837	795,275,447	23,454,407	818,729,854	1,167
JUL 2020	2,732,815,873	33,352,111	2,766,167,984	29,191,898	2,795,359,882	1,238
JUN 2020	1,284,277,059	61,939,404	1,346,216,463	18,295,881	1,364,512,344	1,862
MAJ 2020	3,095,888,499	54,226,931	3,150,115,430	3,021,914	3,153,137,344	1,384
APRIL 2020	5,307,696,037	103,385,875	5,411,081,912	11,449,781	5,422,531,693	1,039

BELEX15	BELEX15	BELEXline
Vrednost / Value	754.40	1,585.54
% Promena / % Change	+ 1.17%	+ 0.91%
Promena / Change	+ 8.76	+ 14.35
Promet/ Turnover	174,087,512	285,509,895
Vrednost na dan 26.02.2021.	745.67	1,575.17
Najviša vrednost/ Maximum	760.74	1,596.65
Najniža vrednost/ Minimum	736.71	1,564.81
Godišnja promena / Annual change	+ 0.77%	+ 1.25%
PE	9.21	9.18
PB	0.70	0.61
FIS	27.04	16.77
b-FIS	25.33	15.83
s-FIS	28.75	17.70



MESEČNI PREGLED PO HARTIJAMA IZ KORPE INDEKSA BELEX15 / STATISTICS BY BELEX15 BASKET SECURITIES

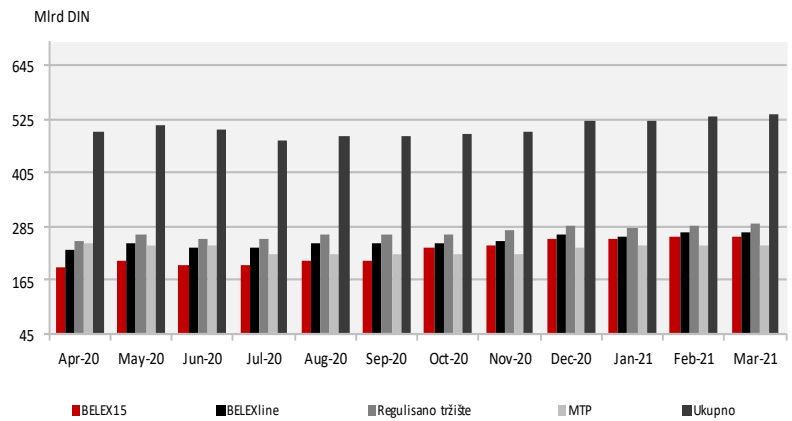
	AERO	ALFA	DNOS	ENHL
Poslednja cena / Last Price	1,000	20,700	4,028	385
Broj transakcija / No. of Trades	376	1	40	3
Obim trgovanja / Volume	4,865	7	4,486	318
Vrednost prometa / Turnover RSD	4,984,484	144,900	17,691,919	121,235
Vrednost prometa EUR / Turnover EUR	42,393	1,232	150,469	1,031
Tržišna kapitalizacija / Market Cap	35,026,129,000	3,256,772,400	17,022,815,388	4,208,547,420
Tržišna kapitalizacija EUR / Market Cap EUR	297,891,642	27,698,330	144,776,330	35,793,025
Prosek prometa RSD / Average Turnover RSD	216,716.70	6,300.00	769,213.87	5,271.09
Prosek prometa EUR / Average Turnover EUR	1,843.18	53.58	6,542.13	44.83
Prosek broja transakcija / Average No. of Trades	16.35	0.04	1.74	0.13
FIS	57.94%	50.00%	5.25%	12.54%
b-FIS	92.49%	%	10.50%	%
s-FIS	23.38%	100.00%	%	25.09%

	FINT	FITO	IMPL	JESV
Poslednja cena / Last Price	657	2,552	3,500	6,500
Broj transakcija / No. of Trades	8	38	8	22
Obim trgovanja / Volume	1,570	4,068	525	1,072
Vrednost prometa / Turnover RSD	1,015,410	10,375,245	1,855,450	6,973,125
Vrednost prometa EUR / Turnover EUR	8,636	88,243	15,780	59,307
Tržišna kapitalizacija / Market Cap	17,417,402,442	6,737,280,000	3,298,004,500	1,658,345,000
Tržišna kapitalizacija EUR / Market Cap EUR	148,132,230	57,299,492	28,049,002	14,103,960
Prosek prometa RSD / Average Turnover RSD	44,148.26	451,097.61	80,671.74	303,179.35
Prosek prometa EUR / Average Turnover EUR	375.49	3,836.66	686.08	2,578.58
Prosek broja transakcija / Average No. of Trades	0.35	1.65	0.35	0.96
FIS	14.89%	57.47%	0.00%	5.61%
b-FIS	%	94.64%	%	11.23%
s-FIS	29.78%	20.29%	%	%

	KMBN	MTLC	NIIS	TGAS
Poslednja cena / Last Price	3,270	1,850	624	14,200
Broj transakcija / No. of Trades	32	21	501	25
Obim trgovanja / Volume	12,718	2,926	110,717	1,137
Vrednost prometa / Turnover RSD	41,022,691	5,456,131	68,145,233	16,301,689
Vrednost prometa EUR / Turnover EUR	348,888	46,404	579,597	138,648
Tržišna kapitalizacija / Market Cap	54,994,716,120	3,774,000,000	101,749,689,600	14,720,543,600
Tržišna kapitalizacija EUR / Market Cap EUR	467,721,291	32,097,268	865,364,884	125,195,876
Prosek prometa RSD / Average Turnover RSD	1,783,595.26	237,223.09	2,962,836.22	708,769.09
Prosek prometa EUR / Average Turnover EUR	15,169.03	2,017.58	25,199.88	6,028.19
Prosek broja transakcija / Average No. of Trades	1.39	0.91	21.78	1.09
FIS	8.59%	28.82%	46.28%	0.21%
b-FIS	1.86%	%	38.44%	0.43%
s-FIS	15.31%	57.64%	54.12%	%

## TRŽIŠNA KAPITALIZACIJA / MARKET CAPITALIZATION

	U hiljadama / In thousands RSD	U hiljadama / In thousands EUR
Ukupno/Total	534,607,601	4,546,752
Regulisano tržište/ Regulated Market	290,325,271	2,469,170
Listing	218,828,830	1,861,104
Prime Listing –akcije / shares	158,401,768	1,347,182
Standard Listing-akcije / shares	60,427,061	513,923
Open Market	71,496,442	608,066
MTP	244,282,329	2,077,582
BELEX15	263,864,245	2,244,123
BELEXline	272,855,227	2,320,590



## SEKTORSKA KLASIFIKACIJA – AKCIJE / SECTOR CLASSIFICATION – SHARES

Sektor / Sector	Promet – Akcije / Turnover - Shares	Br. transakcija – Akcije / No. Of Trades - Shares	Tržišna kapitalizacija / Market Capitalization	FIS
Prerađivačka industrija	154,748,375	173	188,602,249,089	5.88%
Rudarstvo	68,145,233	501	102,397,818,319	46.28%
Finansijske delatnosti i delatnost osiguranja	174,246,104	206	84,711,556,163	3.58%
Trgovina na veliko i malo i popravka motornih vozila	735,870	13	40,468,256,847	0.00%
Poslovanje nekretninama	4,984,484	376	36,476,058,898	57.94%
Građevinarstvo	7,765,490	36	26,137,287,833	5.04%
Snabdevanje električnom energijom, gasom i parom	1,015,410	8	17,417,402,442	14.89%
Poljoprivreda, šumarstvo i ribarstvo	55,497,624	280	16,469,267,166	2.64%
Saobraćaj i skladištenje	2,423,756	34	11,951,234,932	0.00%
Stručne, naučne, inovacione i tehničke delatnosti	1,778,118	20	3,352,292,089	3.40%
Usluge smeštaja i ishrane	7,500	1	3,258,380,618	0.00%
Informisanje i komunikacije		0	2,092,729,036	0.00%
Administrativne i pomoćne uslužne delatnosti		0	731,662,293	0.00%
Obrazovanje		0	203,830,124	0.00%
Ostale uslužne delatnosti		0	173,506,500	0.00%
Umetnost, zabava i rekreacija		0	102,219,000	0.00%
Snabdevanje vodom i upravljanje otpadnim vodama		0	58,057,137	0.00%
Zdravstvena i socijalna zaštita		0	3,792,040	0.00%

## UČEŠĆE ČLANOVA U PROMETU / PARTICIPATION OF STOCK EXCHANGE MEMBERS IN THE TURNOVER

### REGULISANO TRŽIŠTE / REGULATED MARKET

Član Berze / Member	Udeo u prometu / Participation in Turnover (%)	Udeo u broju transakcija / Participation in No. Of Transactions (%)
M&V Investments a.d., Beograd	23.15%	4.75%
UniCredit Bank Srbija a.d., Beograd	20.02%	0.04%
Erste bank a.d., Novi Sad	15.66%	1.39%
Komercijalna banka a.d., Beograd	14.02%	19.80%
Raiffeisen banka a.d., Beograd	8.07%	1.79%
Vojvođanska banka a.d., Novi Sad	7.06%	21.66%
Tesla Capital a.d., Beograd	6.26%	5.62%
Tezoro broker a.d., Beograd	1.70%	1.53%
Illirika investments a.d., Beograd	1.13%	3.07%
Dunav Stockbroker a.d., Beograd	0.73%	1.90%
Ostali	2.20%	38.46%

### MTP

Član Berze / Member	Udeo u prometu / Participation in Turnover (%)	Udeo u broju transakcija / Participation in No. Of Transactions (%)
Vojvođanska banka a.d., Novi Sad	34.75%	27.05%
Tesla Capital a.d., Beograd	14.11%	14.32%
Illirika investments a.d., Beograd	13.08%	13.30%
Momentum Securities a.d., Novi Sad	13.05%	7.05%
Intercity broker a.d., Beograd	5.70%	7.73%
Komercijalna banka a.d., Beograd	5.63%	14.09%
M&V Investments a.d., Beograd	5.24%	5.68%
Dunav Stockbroker a.d., Beograd	2.45%	0.45%
Tandem financial a.d., Novi Sad	1.57%	2.61%
Erste bank a.d., Novi Sad	1.19%	2.73%
Ostali	3.23%	5.00%

**UČEŠĆE STRANIH INVESTITORA / FOREIGN INVESTORS PARTICIPATION—FIT, FIS, FIB**

Mesec / Month	FIT	FIS	b-FIS	s-FIS	FIB
MART 2021	7.66%	11.00%	11.16%	10.83%	6.40%
FEBRUAR 2021	20.34%	40.03%	18.42%	61.65%	17.19%
JANUAR 2021	12.64%	12.80%	19.65%	5.95%	12.63%
DECEMBAR 2020	11.22%	22.98%	26.97%	18.98%	9.13%
NOVEMBAR 2020	5.80%	33.35%	50.55%	16.14%	3.76%
OKTOBAR 2020	19.24%	22.70%	22.10%	23.30%	18.92%
SEPTEMBAR 2020	2.65%	37.18%	35.12%	39.25%	1.38%
AVGUST 2020	36.27%	54.57%	36.65%	72.48%	12.91%
JUL 2020	11.33%	37.77%	35.34%	40.20%	10.00%
JUN 2020	36.22%	47.86%	36.49%	59.23%	33.22%
MAJ 2020	6.15%	28.74%	23.40%	34.07%	4.17%
APRIL 2020	20.63%	34.99%	29.08%	40.90%	19.88%

Prema specifikaciji klijenata Centralnog registra / According to the Central depository clients

**NAJVEĆE PROMENE CENE, REGULISANO TRŽIŠTE / BIGGEST PRICE CHANGES, REGULATED MARKET**

Izdavalac / Issuer	Cena / Price 31.03.2021.	Cena / Price 26.02.2021.	Promena % / % Change	Izdavalac / Issuer	Cena / Price 31.03.2021.	Cena / Price 26.02.2021.	Promena % / % Change
Dunav osiguranje a.d., Beograd, DNOS	4,028	3,456	+ 16.55%	Komercijalna banka a.d., Beograd,	961	1,185	-18.90%
Philip Morris Operations a.d., Niš, DINNPB	6,500	6,150	+ 5.69%	Globos osiguranje a.d., Beograd, GLOS	550	590	-6.78%
Lasta a.d., Beograd, LSTA	500	480	+ 4.17%	NIS a.d., Novi Sad, NIIS	624	633	-1.42%
Galenika Fitofarmacija a.d., Zemun, FITO	2,552	2,454	+ 3.99%	Aerodrom Nikola Tesla a.d., Beograd, AERO	1,000	1,002	-0.20%
Messer Tehnogas a.d., Beograd, TGAS	14,200	13,800	+ 2.90%				

**NAJVEĆA VREDNOST PROMETA, REGULISANO TRŽIŠTE / BIGGEST TURNOVER, REGULATED MARKET**

Izdavalac / Issuer	Vrednost prometa / Turnover	Blok trgovanja / Block Trades	Izdavalac / Issuer	Vrednost prometa / Turnover	Blok trgovanja / Block Trades
ALTA banka a.d., Beograd, JMBN	87,940,640	0	Galenika Fitofarmacija a.d., Zemun, FITO	10,375,245	0
NIS a.d., Novi Sad, NIIS	68,145,233	0	Philip Morris Operations a.d., Niš, DINNPB	7,663,517	0
Komercijalna banka a.d., Beograd, KMBN	41,022,691	0	Jedinstvo a.d., Sevojno, JESV	6,973,125	0
Dunav osiguranje a.d., Beograd, DNOS	17,691,919	0	Metalac a.d., Gornji Milanovac, MTLC	5,456,131	0
Messer Tehnogas a.d., Beograd, TGAS	16,301,689	0	Aerodrom Nikola Tesla a.d., Beograd, AERO	4,984,484	0

**NAJNIŽI P/E, REGULISANO TRŽIŠTE /  
LOWEST P/E, REGULATED MARKET**

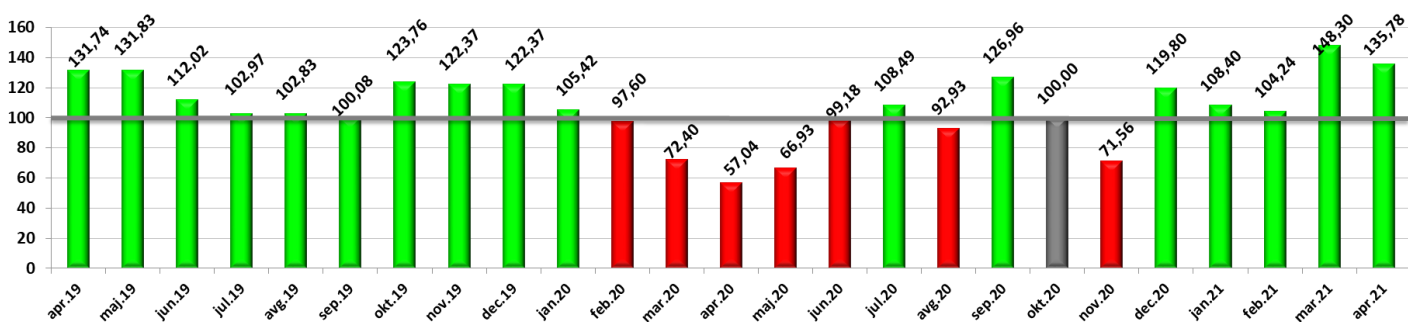
Izdavalac / Issuer	P/E	Izdavalac / Issuer	P/E
Jedinstvo a.d., Sevojno	4.87	Messer Tehnogas a.d., Beograd	7.76
Dunav osiguranje a.d., Beograd	5.32	VP Dunav a.d., Bačka Palanka	8.12
NIS a.d., Novi Sad	5.75	Galenika Fitofarmacija a.d., Zemun	9.80
Komercijalna banka a.d., Beograd	6.28	Kopaonik a.d., Beograd	13.57
Impol Seval a.d., Sevojno	6.53	Metalac a.d., Gornji Milanovac	13.64

**NAJNIŽI P/B, REGULISANO TRŽIŠTE /  
LOWEST P/B, REGULATED MARKET**

Izdavalac / Issuer	P/B	Izdavalac / Issuer	P/B
Lasta a.d., Beograd	0.30	Energoprojekt holding a.d., Beograd	0.46
ALTA banka a.d., Beograd	0.31	Impol Seval a.d., Sevojno	0.48
NIS a.d., Novi Sad	0.39	Jedinstvo a.d., Sevojno	0.59
Alfa plam a.d., Vranje	0.39	Komercijalna banka a.d., Beograd	0.74
Kopaonik a.d., Beograd	0.45	Messer Tehnogas a.d., Beograd	0.74

**NAJVEĆA TRŽIŠNA KAPITALIZACIJA, REGULISANO TRŽIŠTE / BIGGEST MARKET CAPITALIZATION, REGULATED MARKET**

Izdavalac / Issuer	Simbol	Tržišna kapitalizacija - mil RSD / Market Capitalization—mil RSD	FFc	Izdavalac / Issuer	Simbol	Tržišna kapitalizacija - mil RSD / Market Capitalization—mil RSD	FFc
NIS a.d., Novi Sad	NIIS	101,749.690	0.14	Dunav osiguranje a.d., Beograd	DNOS	17,022.815	0.06
Komercijalna banka a.d., Beograd	KMBN	54,994.716	0.17	Messer Tehnogas a.d., Beograd	TGAS	14,720.544	0.18
Aerodrom Nikola Tesla a.d., Beograd	AERO	35,026.129	0.15	Galenika Fitofarmacija a.d., Zemun	FITO	6,737.280	0.10
Philip Morris Operations a.d., Niš	DINNPB	21,506.992	0.11	Energoprojekt holding a.d., Beograd	ENHL	4,208.547	0.13
Fintel energija a.d., Beograd	FINT	17,417.402	0.06	Metalac a.d., Gornji Milanovac	MTLC	3,774.000	0.79

**BELEXsentiment**


## LISTING

### PRIME LISTING—AKCIJE / SHARES

Izdavalac / Issuer	Simbol / Symbol	Cena / Price	Mesečna promena % / Monthly Change %	Obim / Volume	Promet (RSD) / Turnover (RSD)	Raspon cene-52 nedelje / 52 Weeks High/Low	Broj emitovanih akcija / Number of Shares Issued	%Prinos (dividenda) / Dividend	P/E	P/B
Aerodrom Nikola Tesla a.d., Beograd	AERO	1,000	-0.20%	4,865	4,984,484	750 - 1,050	35,026,129	1.30	-77.17	1.18
Energoprojekt holding a.d., Beograd	ENHL	385	+ 1.32%	318	121,235	360 - 550	10,931,292	0.00	-237.07	0.46
Fintel energija a.d., Beograd	FINT	657	+ 1.08%	1,570	1,015,410	530 - 667	26,510,506	0.00	-468.05	40.66
NIS a.d., Novi Sad	NIS	624	-1.42%	110,717	68,145,233	515 - 650	163,060,400	0.04	5.75	0.39

### PRIME LISTING—OBVEZNICE RS / RS BONDS

Simbol / Symbol	Cena / Price	Mesečna promena %	Promet RSD / Turnover RSD	Mesečni raspon cene / Monthly High/Low
RSO17150	102.1197	-1.3914%	240,137,538	102.1197-102.1197
RSO18174	122.4262	+ 1.2085%	612,131,000	122.4262-122.4262
RSO20191	118.6106	+ 0.0569%	139,455,701	118.6106-118.6106
RSO20195	100.0270	+ 0.5135%	235,208,889	100.0270-100.0270
RSSDS20214	96.1800	+ 0.1771%	6,033,294	96.0000-96.1900
RSSDS20225	95.1000	+ 0.0947%	6,366,670	95.0000-95.1100
RSSDS20226	94.1000	+ 0.1064%	6,299,860	94.1000-94.1100
RSSDS20237	93.1000	+ 0.1075%	5,488,427	93.0000-93.1000
RSSDS20238	92.0000	0.0000%	5,425,138	92.0000-92.0200

### STANDARD LISTING—AKCIJE / SHARES

Izdavalac / Issuer	Simbol / Symbol	Cena / Price	Mesečna promena % / Monthly Change %	Obim / Volume	Promet (RSD) / Turnover (RSD)	Raspon cene-52 nedelje / 52 Weeks High/Low	Broj emitovanih akcija / Number of Shares Issued	%Prinos (dividenda) / Dividend	P/E	P/B
Jedinstvo a.d., Sevojno	JESV	6,500	0.00%	1,072	6,973,125	6,000 - 6,900	255,130	0.09	4.87	0.59
Komercijalna banka a.d., Beograd	KMBN	3,270	+ 2.51%	12,718	41,022,691	2,150 - 3,300	16,817,956	0.00	6.28	0.74
Metalac a.d., Gornji Milanovac	MTLC	1,850	0.00%	2,926	5,456,131	1,771 - 1,950	2,040,000	0.04	13.64	1.12

## OPEN MARKET

### AKCIJE / SHARES

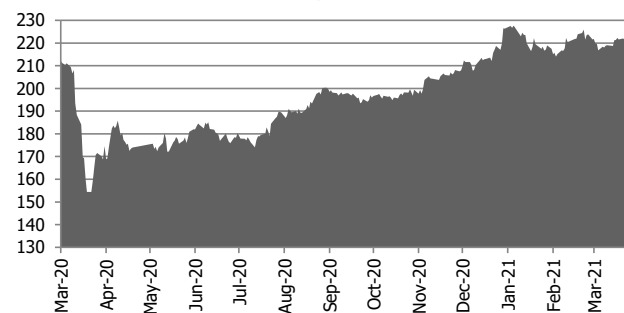
Izdavalac / Issuer	Simbol / Symbol	Cena / Price	Mesečna promena % / Monthly Change %	Obim / Volume	Promet (RSD) / Turnover (RSD)	Raspon cene-52 nedelje / 52 Weeks High/Low	Broj emitovanih akcija / Number of Shares Issued	Tržišna kapitalizacija / Market Capitalization
Alfa plam a.d., Vranje	ALFA	20,700	0.00%	7	144,900	20700-26500	157,332	3,256,772
Philip Morris Operations a.d., Niš	DINNPB	6,500	+ 5.60%	1,197	7,663,517	5499-6550	3,308,768	21,506,992
Dunav osiguranje a.d., Beograd	DNOS	4,028	+ 16.55%	4,486	17,691,919	3000-4500	4,226,121	17,022,815
Galenika Fitofarmacija a.d., Zemun	FITO	2,552	+ 3.99%	4,068	10,375,245	2400-2750	2,640,000	6,737,280
Globos osiguranje a.d., Beograd	GLOS	550	-6.78%	878	537,019	300-650	1,369,237	753,080
Impol Seval a.d., Sevojno	IMPL	3,500	0.00%	525	1,855,450	3200-4000	942,287	3,298,005
ALTA banka a.d., Beograd	JMBN	4,350	+ 1.05%	20,210	87,940,640	4000-5750	288,330	1,254,236
Komercijalna banka a.d., Beograd	KMBNPB	961	-18.90%	1,992	2,071,190	610-1248	373,510	358,943
Lasta a.d., Beograd	LSTA	500	+ 4.17%	576	276,307	479-570	2,300,058	1,150,029
Messer Tehnogas a.d., Beograd	TGAS	14,200	+ 2.90%	1,137	16,301,689	12500-14500	1,036,658	14,720,544
Tigar a.d., Pirot	TIGR	25	0.00%	1,080	27,000	20-30	8,156,236	203,906

## AKCIJE

Izdavalac	Simbol	Cena	Mesečna promena %	Obim	Promet (DIN)	Raspon cene-52 nedelje	Broj emitovanih akcija	Tržišna kapitalizacija
Auto kuća 21. maj a.d., Beograd	AKDM	550	-0.18%	303	166,722	350-570	355,803	195,692
AMS Osiguranje a.d., Beograd	AMSO	1,205	-3.60%	15,401	18,905,375	743-1250	314,550	379,033
AMS Osiguranje a.d., Beograd	AMSOPB	652	+ 8.31%	719	468,554	601-660	100,000	65,200
Borac a.d., Šurjan	BRCS	3,800	+ 8.57%	4,376	15,356,601	1166-3800	71,412	271,366
Dinara a.d., Beograd	DINR	397	0.00%	484	192,148	280-400	212,055	84,186
Goša FSO a.d., Simićevo	GFSO	700	0.00%	126	88,200	648-850	126,900	88,830
Goša montaža a.d., Beograd	GMON	1,800	0.00%	341	613,800	1700-2200	221,138	398,048
Hotel Park a.d., Novi Sad	HPNS	250	0.00%	30	7,500	250-250	552,004	138,001
Informatika a.d., Beograd	INFM	1,450	+ 24.46%	60	81,340	1000-1450	180,011	261,016
Irmovo a.d., Kisač	IRMV	1,710	+ 0.41%	594	1,014,872	1703-1710	106,219	181,634
Iritel a.d., Beograd	IRTL	1,297	-29.89%	454	697,318	1000-1940	290,104	376,265
Jugoprevoz Kruševac a.d., Kruševac	JGPK	2,525	+ 0.80%	717	1,813,699	2300-2551	76,138	192,248
Luka Leget a.d., Sremska Mitrovica	LKLG	2,781	+ 42.62%	120	333,750	1000-2900	200,913	558,739
Minel Koncern a.d., Beograd	MNHL	1,120	-9.09%	965	1,080,800	1120-1232	259,210	290,315
Omoljica a.d., Omoljica	OMOL	2,650	+ 10.55%	14,427	36,265,335	780-2800	326,875	866,219
PP Miletić a.d., Srpski Miletić	PMLT	4,380	-33.54%	532	2,330,216	1301-6590	201,924	884,427
Pomoravlje a.d., Niš	PMNI	290	-25.64%	625	184,050	290-645	367,320	106,523
Preduzeće za puteve Valjevo a.d., Valjevo	PPVA	2,000	-8.84%	169	338,000	1500-2600	201,904	403,808
Pupin Telecom a.d., Zemun	PTLK	15	-25.00%	421	6,315	15-20	1,121,973	16,830
Putevi a.d., Užice	PUUE	140	+ 40.00%	2,171	259,965	66-155	982,241	137,514
Ratko Mitrović a.d., Beograd	RMBG	30	+ 20.00%	145	4,350	30-30	644,807	19,344
Ratar a.d., Pančevo	RTAR	820	+ 2.50%	673	551,860	798-820	122,625	100,553
Sloga a.d., Kač	SLPP	600	+ 2.74%	886	530,600	550-650	246,101	147,661
Sremput a.d., Ruma	SPRU	1,000	+ 18.34%	4	4,000	835-1000	152,134	152,134
Min Div a.d., Svrnjig	SVRL	600	0.00%	1,139	692,701	600-610	948,073	568,844
Tehnohemija a.d., Beograd	THHM	250	0.00%	557	139,250	203-300	1,024,544	256,136
Termovent SC Livnica čelika a.d., Bačka Topola	TLVC	2,850	+ 23.91%	35	100,800	2300-3000	60,569	172,622
Termika-Beograd a.d., Beograd	TRBG	3,900	+ 2.63%	50	190,400	3300-4200	60,924	237,604
Uniprom a.d., Novi Pazar	UNPR	750	0.00%	317	237,750	750-750	201,890	151,418
Utva silosi a.d., Kovin	UTSI	2,850	+ 50.00%	12	33,251	1400-2850	165,729	472,328
Voda Vrnjci a.d., Vrnjačka Banja	VDAV	3,450	+ 1.47%	133	453,100	3350-3500	114,787	396,015
Vital a.d., Vrbas	VITL	1,090	+ 3.81%	678	745,450	650-1200	763,937	832,691
Zlatarplast a.d., Nova Varoš	ZLTP	3,500	0.00%	177	619,500	3500-3500	63,514	222,299
Žitopek a.d., Niš	ZTPK	579	+ 1.58%	673	389,958	570-770	247,899	143,534

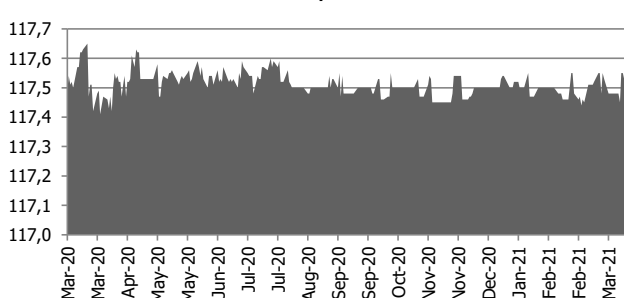
Stock Indices	LAST	YTD Change	YoY Change	Monthly Change
SRX USD	225,86	-0,22%	10,86%	-2,30%
DJ BALKAN 50	446,43	0,95%	43,73%	0,31%
CECE BANKING	1126,81	11,26%	46,85%	2,48%
DJ Stoxx 50	3412	9,77%	24,86%	5,98%
Eurotop 100	3194,57	10,83%	24,18%	5,65%
FTSE 100	6925,62	6,43%	22,07%	3,43%
Xetra DAX	15368,39	12,02%	23,85%	8,14%
S&P 500	4163,26	10,84%	47,47%	5,65%
DJ Industrial	34077,63	11,34%	44,09%	4,11%
Nikkei 225	29100,38	6,03%	50,93%	0,36%

**SRX/ USD**



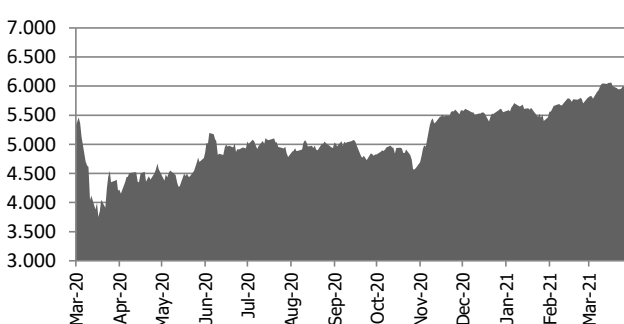
FX & MM Rates	BID	Monthly High	Monthly Low	Monthly Change
EUR/USD	1,2033	1,2079	1,1714	-2,95%
EUR/GBP	0,8605	0,8719	0,8473	-1,88%
EUR/CHF	1,1016	1,1118	1,0976	0,92%
EUR/RSD	117,47	117,57	117,57	0,09%
EUR/JPY	130,14	130,96	129,58	0,98%
3M Euro Deposit	0,53	0,66	0,25	1,49%
3M RSD Deposit	9,99	12,19	9,10	4,81%

**EUR/RSD**



Commodities	LAST	Units	Monthly Change
Gold	1769,31	\$/oz	-1,55%
Silver	25,81	\$/oz	-9,14%
LME Copper	CU 9415.0/15.0 1	\$/ton	7,24%
LME Aluminum	AL 2331.0/31.0 1	\$/ton	12,03%
IPE Brent	67,05	\$/bbl	-4,08%
IPE Gasoil	529,00	\$/ton	-5,29%
CBOT Wheat	652,25	USc/bsh	-5,99%
CBOT Corn	592,00	USc/bsh	1,55%
CBOT Soybean	1449,75	USc/bsh	2,19%
CBOT Soymeal	407,50	USD/ton	0,00%
LIFFE Coffee	1357,00	USD/ton	-8,64%
LIFFE Sugar	454,00	USD/ton	-8,36%

**CAC 40**



Debt – CDS	LAST	Term	S&P	Moody's
UNITED KINGDOM	12,83	5Y	AA	Aa2
GERMANY	10,22	5Y	AAA	Aaa
SPAIN	35,65	5Y	A	Baa1
UKRAINE	438,97	5Y	B	Caa1
ROMANIA	87,02	5Y	BBB-	Baa3
HUNGARY	51,64	5Y	BBB	Baa3
CROATIA	74,47	5Y	BBB-	Ba2
JAPAN	15,88	5Y	A+	A1
CHINA	46,80	5Y	A+	A1
ARGENTINA	8312,69	5Y	SD	Caa2
BRAZIL	196,39	5Y	BB-	Ba2
MEXICO	89,18	5Y	A-	A3

## DJ STOXX 50 Vrednost 3.323,18



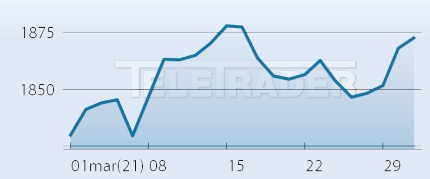
### ↑ DOBITNICI

IME	CENA	PROMENA%	OBIM
LINDE PLC EO 0	238,05	15,45%	37.087
DT.TELEKOM AG NA	17,11	13,64%	1.886.212
DAIMLER AG NA O.N.	75,31	13,33%	529.764
SANOFI SA INHABER EO 2	83,99	10,08%	107.712
RECKITT BENCK.GRP LS-	77,30	9,18%	27.649

### ↓ GUBITNICI

IME	CENA	PROMENA%	OBIM
RIO TINTO PLC LS-	66,60	-10,47%	52.653
ADIDAS AG NA O.N.	267,20	-9,08%	26.167
BHP GROUP PLC DL-	24,80	-8,37%	96.534
NOVO-NORDISK NAM.B	58,00	-4,05%	61.706
AIRBUS	99,00	-1,86%	79.513

## Crobex Vrednost 1.872,22



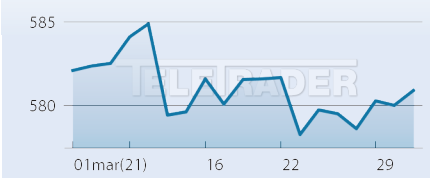
### ↑ DOBITNICI

IME	CENA	PROMENA%	OBIM
Atlantic grupa d.d. -	1.540,00	11,59%	6.198
Podravka d.d. - redovne	548,00	9,16%	27.153
Dalekovod d.d. - redovne	6,82	-3,94%	236.547
Valamar Riviera d.d.	28,80	-6,49%	410.552
Ingra d.d. - redovne	11,00	-15,38%	362.996

### ↓ GUBITNICI

IME	CENA	PROMENA%	OBIM
Ingra d.d. - redovne	11,00	-15,38%	362.996
Valamar Riviera d.d.	28,80	-6,49%	410.552
Dalekovod d.d. - redovne	6,82	-3,94%	236.547
Podravka d.d. - redovne	548,00	9,16%	27.153
Atlantic grupa d.d. -	1.540,00	11,59%	6.198

## BIRS Vrednost 580,01



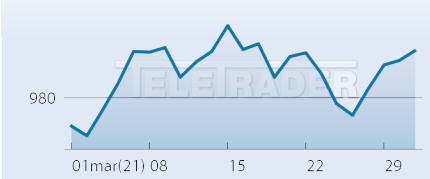
### ↑ DOBITNICI

IME	CENA	PROMENA%	OBIM
Telekom Srpske a.d.	1,04	0,97%	3.087.446

### ↓ GUBITNICI

IME	CENA	PROMENA%	OBIM
Telekom Srpske a.d.	1,04	0,97%	3.087.446

## SBI TOP Vrednost 990,21



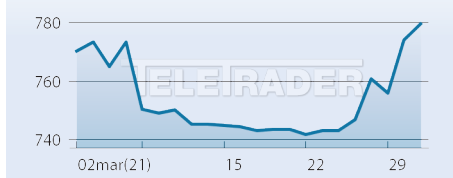
### ↑ DOBITNICI

IME	CENA	PROMENA%	OBIM
TELEKOM SLOVENIJE	50,00	5,93%	22.751
PETROL	372,00	3,33%	4.606
KRKA	94,80	1,94%	174.105
ZAVAROVALNICA TRIGLAV	31,80	-0,31%	59.440
POZAVAROVALNICA SAVA	22,60	-3,42%	93.985

### ↓ GUBITNICI

IME	CENA	PROMENA%	OBIM
POZAVAROVALNICA SAVA	22,60	-3,42%	93.985
ZAVAROVALNICA TRIGLAV	31,80	-0,31%	59.440
KRKA	94,80	1,94%	174.105
PETROL	372,00	3,33%	4.606
TELEKOM SLOVENIJE	50,00	5,93%	22.751

## SASX10 Vrednost 779,71



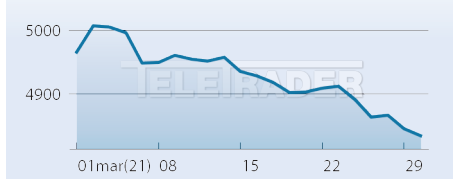
### ↑ DOBITNICI

IME	CENA	PROMENA%	OBIM
BADECO ADRIA D.D.	285,74	5,83%	730
SARAJEVO OSIGURANJE	15,49	-0,06%	1.810

### ↓ GUBITNICI

IME	CENA	PROMENA%	OBIM
SARAJEVO OSIGURANJE	15,49	-0,06%	1.810
BADECO ADRIA D.D.	285,74	5,83%	730

## MBI10 Vrednost 4.834,77



### ↑ DOBITNICI

IME	CENA	PROMENA%	OBIM
Komercijalna banka	7.951,00	1,94%	16.174
Makedonski Telekom	327,00	0,00%	2.714
NLB Banka Skopje	18.601,00	-5,58%	791
Makedonijaturist Skopje	4.161,00	-9,54%	2.537

### ↓ GUBITNICI

IME	CENA	PROMENA%	OBIM
Makedonijaturist Skopje	4.161,00	-9,54%	2.537
NLB Banka Skopje	18.601,00	-5,58%	791
Makedonski Telekom	327,00	0,00%	2.714
Komercijalna banka	7.951,00	1,94%	16.174

Tehnologiju i podatke obezbedio TeleTrader d.o.o. Podaci o postignutim cenama, procentualnim promenama i obimu su prikazani na mesečnom nivou. Cene su izražene u lokalnim valutama. Uprkos pažljivom preuzimanju i pribavljanju podataka, TeleTrader d.o.o. ne preuzima nikakvu odgovornost za ispravnost, potpunost ili tačnost informacija.

# TeleTrader Professional

## The Professional Trader's Workstation

Profesionalna platforma za analizu berzanskih podataka

<http://professional.teletrader.com/>

